



ADDRESS
H A R B O U R P O I N T



WHERE LIFE
HAPPENS





At the Crossroads

Address Harbour Point creates a visual gateway to Dubai Creek Harbour. Offering uninterrupted views of the iconic Dubai Creek Tower and the Downtown Dubai skyline, the serviced residences are truly stunning, outside and in.

Limitless Activities with Uninterrupted Views

The luxury serviced residences offer seamless access to the marina, the park, and the pier, allowing residents to revel in countless dining, retail and entertainment experiences.









Your Ultimate Address

Stamp Address Harbour Point as your official address. Select from 1, 2, and 3 bedroom waterfront apartments. It is truly here where life happens!





ADDRESS
HARBOUR POINT

FLOOR PLANS





ADDRESS HARBOUR POINT

DUBAI CREEK HARBOUR



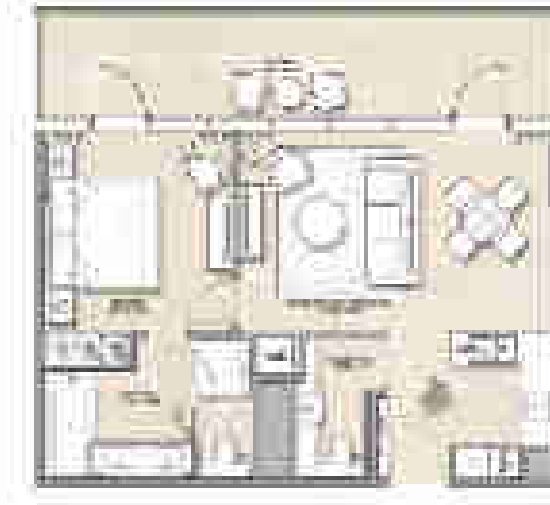
FLOOR PLAN 1. All dimensions are in imperial and metric, and measured from finish to finish excluding construction tolerances. 2. All materials, dimensions, and drawings are approximate only. 3. Information is subject to change without notice, at developer's absolute discretion. 4. Actual area may vary from the stated area. 5. Drawings not to scale. 6. All images used are for illustrative purposes only and do not represent the actual size, features, specifications, fittings, and furnishings. 7. The developer reserves the right to make revisions / alterations, at its absolute discretion, without any liability whatsoever.



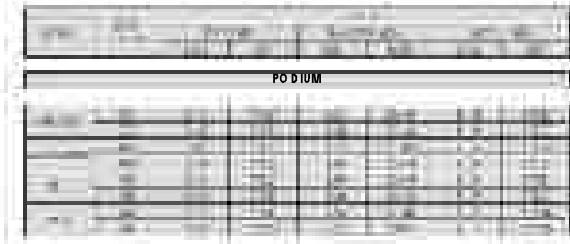


ADDRESS HARBOUR POINT

DUBAI CREEK HARBOUR



VILLAS APARTMENT
1 BEDROOM APARTMENT - PD-1B



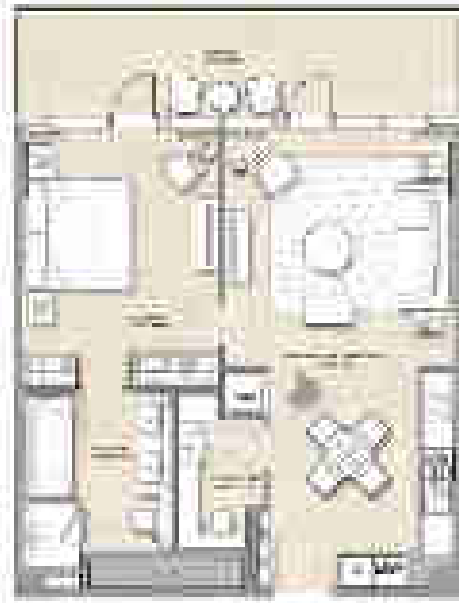
FLOOR PLAN 1. All dimensions are in imperial and metric, and measured from finish to finish excluding construction tolerances. 2. All materials, dimensions, and drawings are approximate only. 3. Information is subject to change without notice, at developer's absolute discretion. 4. Actual area may vary from the stated area. 5. Drawings not to scale. 6. All images used are for illustrative purposes only and do not represent the actual size, features, specifications, fittings, and furnishings. 7. The developer reserves the right to make revisions / alterations, at its absolute discretion, without any liability whatsoever.



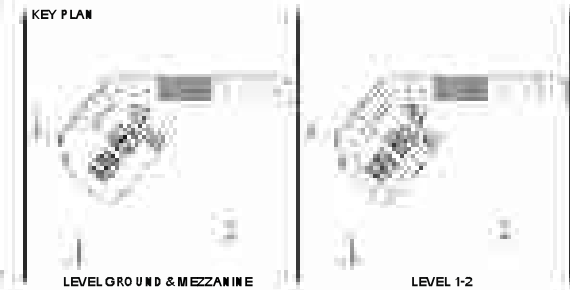
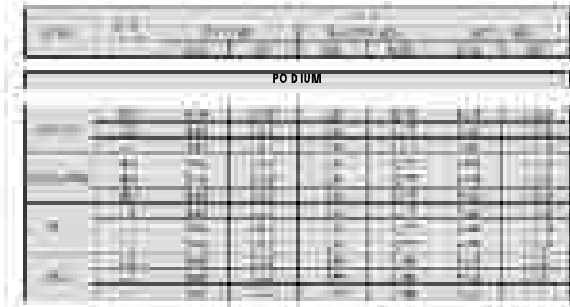


ADDRESS HARBOUR POINT

DUBAI CREEK HARBOUR



VILLAS APARTMENT
1 BEDROOM APARTMENT - PD-1C



FLOOR PLAN 1. All dimensions are in imperial and metric, and measured from finish to finish excluding construction tolerances. 2. All materials, dimensions, and drawings are approximate only. 3. Information is subject to change without notice, at developer's absolute discretion. 4. Actual area may vary from the stated area. 5. Drawings not to scale. 6. All images used are for illustrative purposes only and do not represent the actual size, features, specifications, fittings, and furnishings. 7. The developer reserves the right to make revisions / alterations, at it's absolute discretion, without any liability whatsoever.





ADDRESS HARBOUR POINT

DUBAI CREEK HARBOUR



FLOOR PLAN 1. All dimensions are in imperial and metric, and measured from finish to finish excluding construction tolerances. 2. All materials, dimensions, and drawings are approximate only. 3. Information is subject to change without notice, at developer's absolute discretion. 4. Actual area may vary from the stated area. 5. Drawings not to scale. 6. All images used are for illustrative purposes only and do not represent the actual size, features, specifications, fittings, and furnishings. 7. The developer reserves the right to make revisions / alterations, at its absolute discretion, without any liability whatsoever.





ADDRESS HARBOUR POINT

DUBAI CREEK HARBOUR



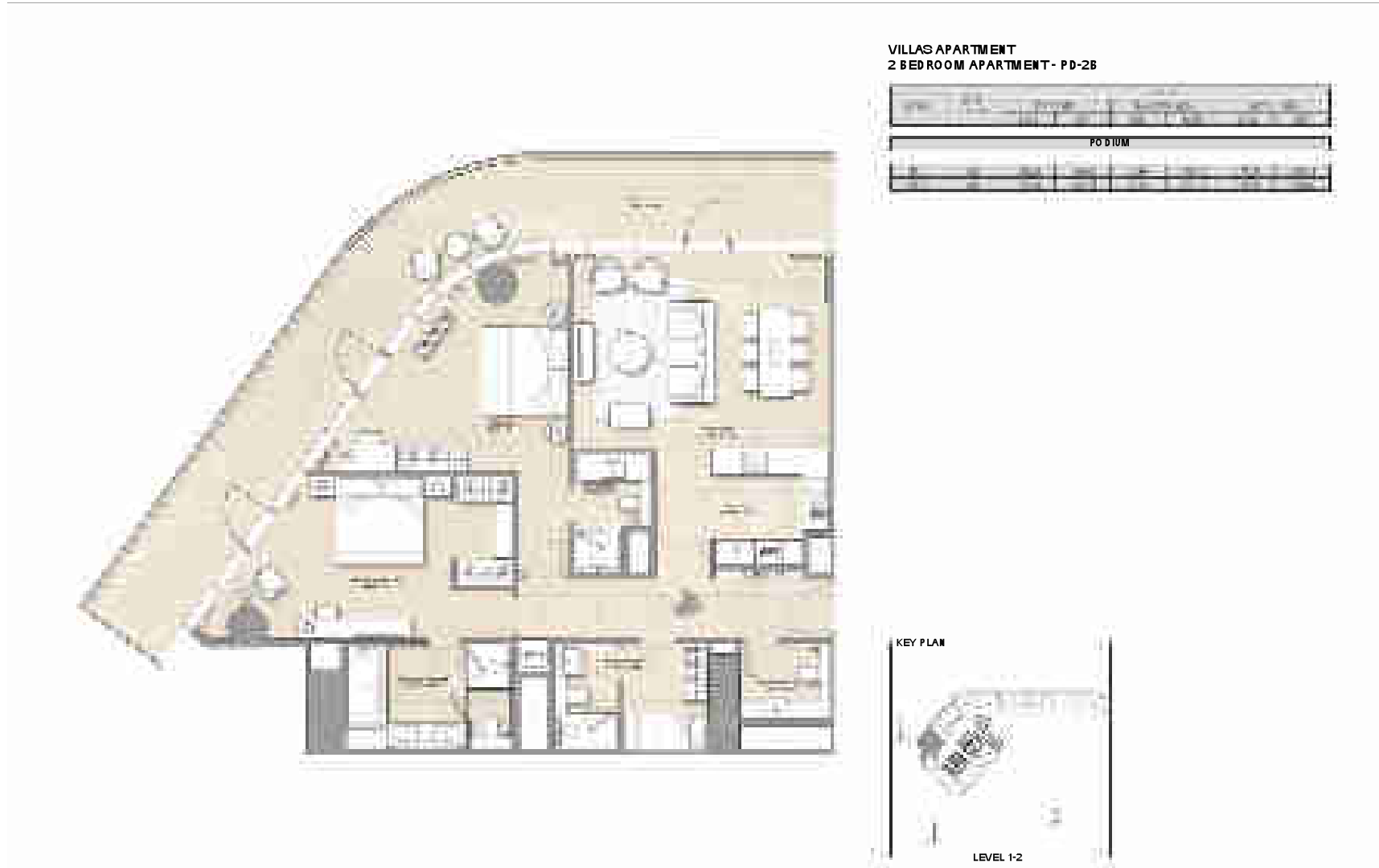
FLOOR PLAN 1. All dimensions are in imperial and metric, and measured from finish to finish excluding construction tolerances. 2. All materials, dimensions, and drawings are approximate only. 3. Information is subject to change without notice, at developer's absolute discretion. 4. Actual area may vary from the stated area. 5. Drawings not to scale. 6. All images used are for illustrative purposes only and do not represent the actual size, features, specifications, fittings, and furnishings. 7. The developer reserves the right to make revisions / alterations, at its absolute discretion, without any liability whatsoever.





ADDRESS HARBOUR POINT

DUBAI CREEK HARBOUR



FLOOR PLAN 1. All dimensions are in imperial and metric, and measured from finish to finish excluding construction tolerances. 2. All materials, dimensions, and drawings are approximate only. 3. Information is subject to change without notice, at developer's absolute discretion. 4. Actual area may vary from the stated area. 5. Drawings not to scale. 6. All images used are for illustrative purposes only and do not represent the actual size, features, specifications, fittings, and furnishings. 7. The developer reserves the right to make revisions / alterations, at its absolute discretion, without any liability whatsoever.





ADDRESS HARBOUR POINT

DUBAI CREEK HARBOUR



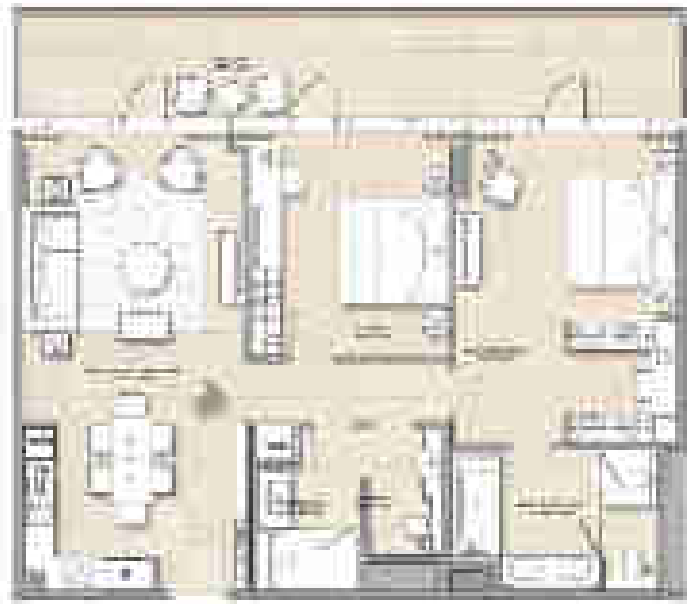
FLOOR PLAN 1. All dimensions are in imperial and metric, and measured from finish to finish excluding construction tolerances. 2. All materials, dimensions, and drawings are approximate only. 3. Information is subject to change without notice, at developer's absolute discretion. 4. Actual area may vary from the stated area. 5. Drawings not to scale. 6. All images used are for illustrative purposes only and do not represent the actual size, features, specifications, fittings, and furnishings. 7. The developer reserves the right to make revisions / alterations, at its absolute discretion, without any liability whatsoever.





ADDRESS
HARBOUR POINT

DUBAI CREEK
HARBOUR



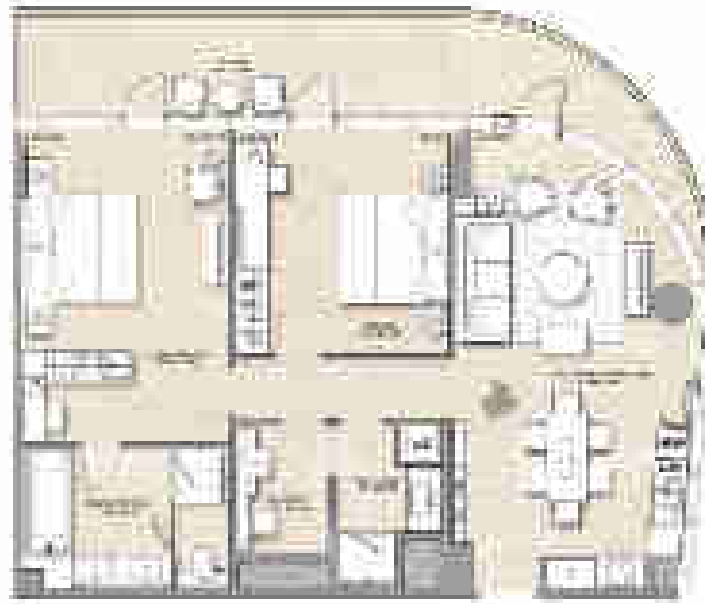
VILLAS APARTMENT
2 BEDROOM APARTMENT - PD-2D

PODIUM											
	1	2	3	4	5	6	7	8	9	10	11
USA	1	2	3	4	5	6	7	8	9	10	11
	12	13	14	15	16	17	18	19	20	21	22
	23	24	25	26	27	28	29	30	31	32	33
	34	35	36	37	38	39	40	41	42	43	44
	45	46	47	48	49	50	51	52	53	54	55
CAN	56	57	58	59	60	61	62	63	64	65	66
	67	68	69	70	71	72	73	74	75	76	77
	78	79	80	81	82	83	84	85	86	87	88
	89	90	91	92	93	94	95	96	97	98	99
	100	101	102	103	104	105	106	107	108	109	110
GBR	111	112	113	114	115	116	117	118	119	120	121
	122	123	124	125	126	127	128	129	130	131	132
	133	134	135	136	137	138	139	140	141	142	143
	144	145	146	147	148	149	150	151	152	153	154
	155	156	157	158	159	160	161	162	163	164	165
FRA	166	167	168	169	170	171	172	173	174	175	176
	177	178	179	180	181	182	183	184	185	186	187
	188	189	190	191	192	193	194	195	196	197	198
	199	200	201	202	203	204	205	206	207	208	209
	210	211	212	213	214	215	216	217	218	219	220
GER	221	222	223	224	225	226	227	228	229	230	231
	232	233	234	235	236	237	238	239	240	241	242
	243	244	245	246	247	248	249	250	251	252	253
	254	255	256	257	258	259	260	261	262	263	264
	265	266	267	268	269	270	271	272	273	274	275
ITA	276	277	278	279	280	281	282	283	284	285	286
	287	288	289	290	291	292	293	294	295	296	297
	298	299	300	301	302	303	304	305	306	307	308
	309	310	311	312	313	314	315	316	317	318	319
	320	321	322	323	324	325	326	327	328	329	330
JPN	331	332	333	334	335	336	337	338	339	340	341
	342	343	344	345	346	347	348	349	350	351	352
	353	354	355	356	357	358	359	360	361	362	363
	364	365	366	367	368	369	370	371	372	373	374
	375	376	377	378	379	380	381	382	383	384	385
KOR	386	387	388	389	390	391	392	393	394	395	396
	397	398	399	400	401	402	403	404	405	406	407
	408	409	410	411	412	413	414	415	416	417	418
	419	420	421	422	423	424	425	426	427	428	429
	430	431	432	433	434	435	436	437	438	439	440
LUX	441	442	443	444	445	446	447	448	449	450	451
	452	453	454	455	456	457	458	459	460	461	462
	463	464	465	466	467	468	469	470	471	472	473
	474	475	476	477	478	479	480	481	482	483	484
	485	486	487	488	489	490	491	492	493	494	495
ESP	496	497	498	499	500	501	502	503	504	505	506
	507	508	509	510	511	512	513	514	515	516	517
	518	519	520	521	522	523	524	525	526	527	528
	529	530	531	532	533	534	535	536	537	538	539
	540	541	542	543	544	545	546	547	548	549	550
SWE	551	552	553	554	555	556	557	558	559	560	561
	562	563	564	565	566	567	568	569	570	571	572
	573	574	575	576	577	578	579	580	581	582	583
	584	585	586	587	588	589	590	591	592	593	594
	595	596	597	598	599	600	601	602	603	604	605
FIN	606	607	608	609	610	611	612	613	614	615	616
	617	618	619	620	621	622	623	624	625	626	627
	628	629	630	631	632	633	634	635	636	637	638
	639	640	641	642	643	644	645	646	647	648	649
	650	651	652	653	654	655	656	657	658	659	660
NOR	661	662	663	664	665	666	667	668	669	670	671
	672	673	674	675	676	677	678	679	680	681	682
	683	684	685	686	687	688	689	690	691	692	693
	694	695	696	697	698	699	700	701	702	703	704
	705	706	707	708	709	710	711	712	713	714	715
AUT	716	717	718	719	720	721	722	723	724	725	726
	727	728	729	730	731	732	733	734	735	736	737
	738	739	740	741	742	743	744	745	746	747	748
	749	750	751	752	753	754	755	756	757	758	759
	760	761	762	763	764	765	766	767	768	769	770
SLO	771	772	773	774	775	776	777	778	779	780	781
	782	783	784	785	786	787	788	789	790	791	792
	793	794	795	796	797	798	799	800	801	802	803
	804	805	806	807	808	809	810	811	812	813	814
	815	816	817	818	819	820	821	822	823	824	825
CZE	826	827	828	829	830	831	832	833	834	835	836
	837	838	839	840	841	842	843	844	845	846	847
	848	849	850	851	852	853	854	855	856	857	858
	859	860	861	862	863	864	865	866	867	868	869
	870	871	872	873	874	875	876	877	878	879	880
SVK	881	882	883	884	885	886	887	888	889	890	891
	892	893	894	895	896	897	898	899	900	901	902
	903	904	905	906	907	908	909	910	911	912	913
	914	915	916	917	918	919	920	921	922	923	924
	925	926	927	928	929	930	931	932	933	934	935
UKR	936	937	938	939	940	941	942	943	944	945	946
	947	948	949	950	951	952	953	954	955	956	957
	958	959	960	961	962	963	964	965	966	967	968
	969	970	971	972	973	974	975	976	977	978	979
	980	981	982	983	984	985	986	987	988	989	990
BLR	991	992	993	994	995	996	997	998	999	1000	1001
	1002	1003	1004	1005	1006	1007	1008	1009	1010	1011	1012
	1013	1014	1015	1016	1017	1018	1019	1020	1021	1022	1023
	1024	1025	1026	1027	1028	1029	1030	1031	1032	1033	1034
	1035	1036	1037	1038	1039	1040	1041	1042	1043	1044	1045
KAZ	1046	1047	1048	1049	1050	1051	1052	1053	1054	1055	1056
	1057	1058	1059	1060	1061	1062	1063	1064	1065	1066	1067
	1068	1069	1070	1071	1072	1073	1074	1075	1076	1077	1078
	1079	1080	1081	1082	1083	1084	1085	1086	1087	1088	1089
	1090	1091	1092	1093	1094	1095	1096	1097	1098	1099	1100
KGZ	1101	1102	1103	1104	1105	1106	1107	1108	1109	1110	1111
	1112	1113	1114	1115	1116	1117	1118	1119	1120	1121	1122
	1123	1124	1125	1126	1127	1128	1129	1130	1131	1132	1133
	1134	1135	1136	1137	1138	1139	1140	1141	1142	1143	1144
	1145	1146	1147	1148	1149	1150	1151	1152	1153	1154	1155
TJK	1156	1157	1158	1159	1160	1161	1162	1163	1164	1165	1166
	1167	1168	1169	1170	1171	1172	1173	1174	1175	1176	1177
	1178	1179	1180	1181	1182	1183	1184	1185	1186	1187	1188
	1189	1190	1191	1192	1193	1194	1195	1196	1197	1198	1199
	1200	1201	1202	1203	1204	1205	1206	1207	1208	1209	1210
UZB	1211	1212	1213	1214	1215	1216	1217	1218	1219	1220	1221
	1222	1223	1224	1225	1226	1227	1228	1229	1230	1231	1232
	1233	1234	1235	1236	1237	1238	1239	1240	1241	1242	1243
	1244	1245	1246	1247	1248	1249	1250	1251	1252	1253	1254
	1255	1256	1257	1258	1259	1260	1261	1262	1263	1264	1265
GEO	1266	1267	1268	1269	1270	1271	1272	1273	1274	1275	1276
	1277	1278	1279	1280	1281	1282	1283	1284	1285	1286	1287
	1288	1289	1290	1291	1292	1293	1294	1295	1296	1297	1298
	1299	1300	1301	1302	1303	1304	1305	1306	1307	1308	1309
	1310	1311	1312	1313	1314	1315	1316	1317	1318	1319	1320
ARM	1321	1322	1323	1324	1325	1326	1327	1328	1329	1330	1331
	1332	1333	1334	1335	1336	1337	1338	1339	1340	1341	1342
	1343	1344	1345	1346	1347	1348	1349	1350	1351	1352	1353
	1354	1355	1356	1357	1358	1359	1360	1361	1362	1363	1364
	1365	1366	1367	1368	1369	1370	1371	1372	1373	1374	1375
MDA	1376	1377	1378	1379	1380	1381	1382	1383	1384	1385	1386
	1387	1388	1389	1390	1391	1392					

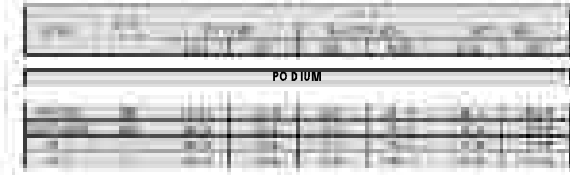


ADDRESS HARBOUR POINT

DUBAI CREEK HARBOUR



VILLAS APARTMENT
2 BEDROOM APARTMENT - PD-2E



FLOOR PLAN 1. All dimensions are in imperial and metric, and measured from finish to finish excluding construction tolerances. 2. All materials, dimensions, and drawings are approximate only. 3. Information is subject to change without notice, at developer's absolute discretion. 4. Actual area may vary from the stated area. 5. Drawings not to scale. 6. All images used are for illustrative purposes only and do not represent the actual size, features, specifications, fittings, and furnishings. 7. The developer reserves the right to make revisions / alterations, at its absolute discretion, without any liability whatsoever.



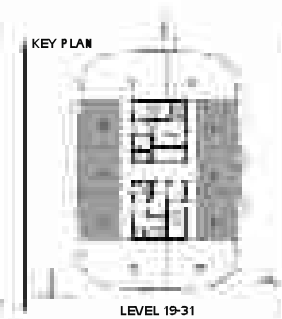
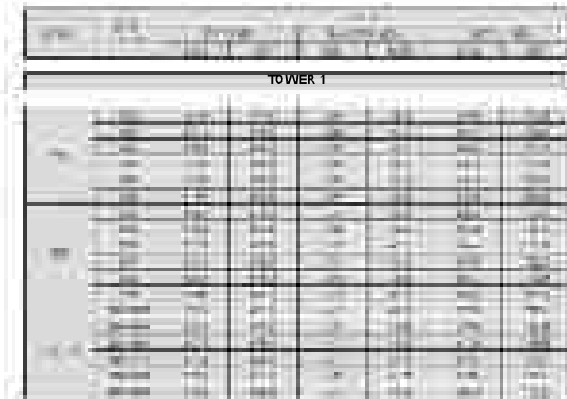


ADDRESS HARBOUR POINT

DUBAI CREEK HARBOUR



SERVICED APARTMENT
1 BEDROOM APARTMENT - T1-1A



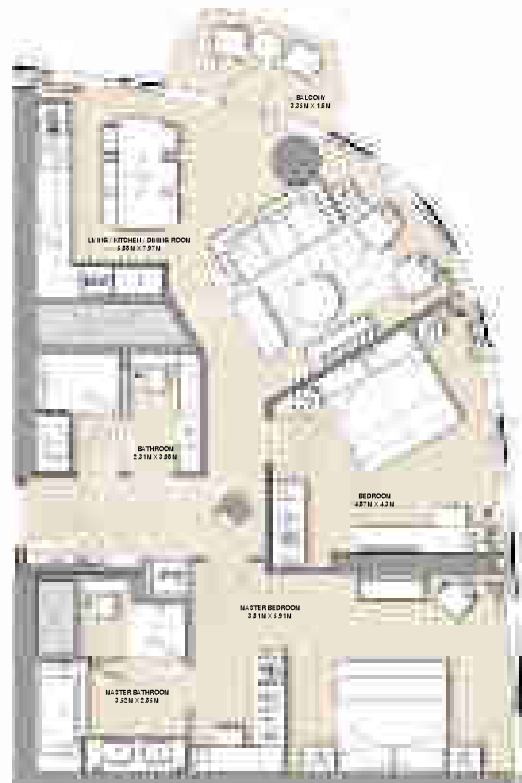
FLOOR PLAN 1. All dimensions are in imperial and metric, and measured from finish to finish excluding construction tolerances. 2. All materials, dimensions, and drawings are approximate only. 3. Information is subject to change without notice, at developer's absolute discretion. 4. Actual area may vary from the stated area. 5. Drawings not to scale. 6. All images used are for illustrative purposes only and do not represent the actual size, features, specifications, fittings, and furnishings. 7. The developer reserves the right to make revisions / alterations, at its absolute discretion, without any liability whatsoever.



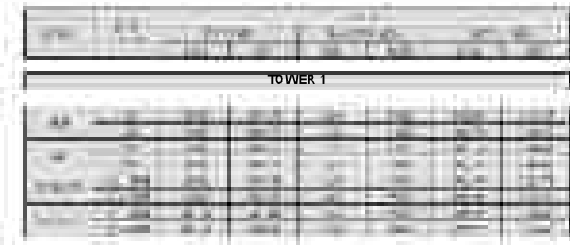


ADDRESS HARBOUR POINT

DUBAI CREEK HARBOUR



SERVICED APARTMENT
2 BEDROOM APARTMENT - T1-2A



FLOOR PLAN 1. All dimensions are in imperial and metric, and measured from finish to finish excluding construction tolerances. 2. All materials, dimensions, and drawings are approximate only. 3. Information is subject to change without notice, at developer's absolute discretion. 4. Actual area may vary from the stated area. 5. Drawings not to scale. 6. All images used are for illustrative purposes only and do not represent the actual size, features, specifications, fittings, and furnishings. 7. The developer reserves the right to make revisions / alterations, at its absolute discretion, without any liability whatsoever.





ADDRESS HARBOUR POINT

DUBAI CREEK HARBOUR



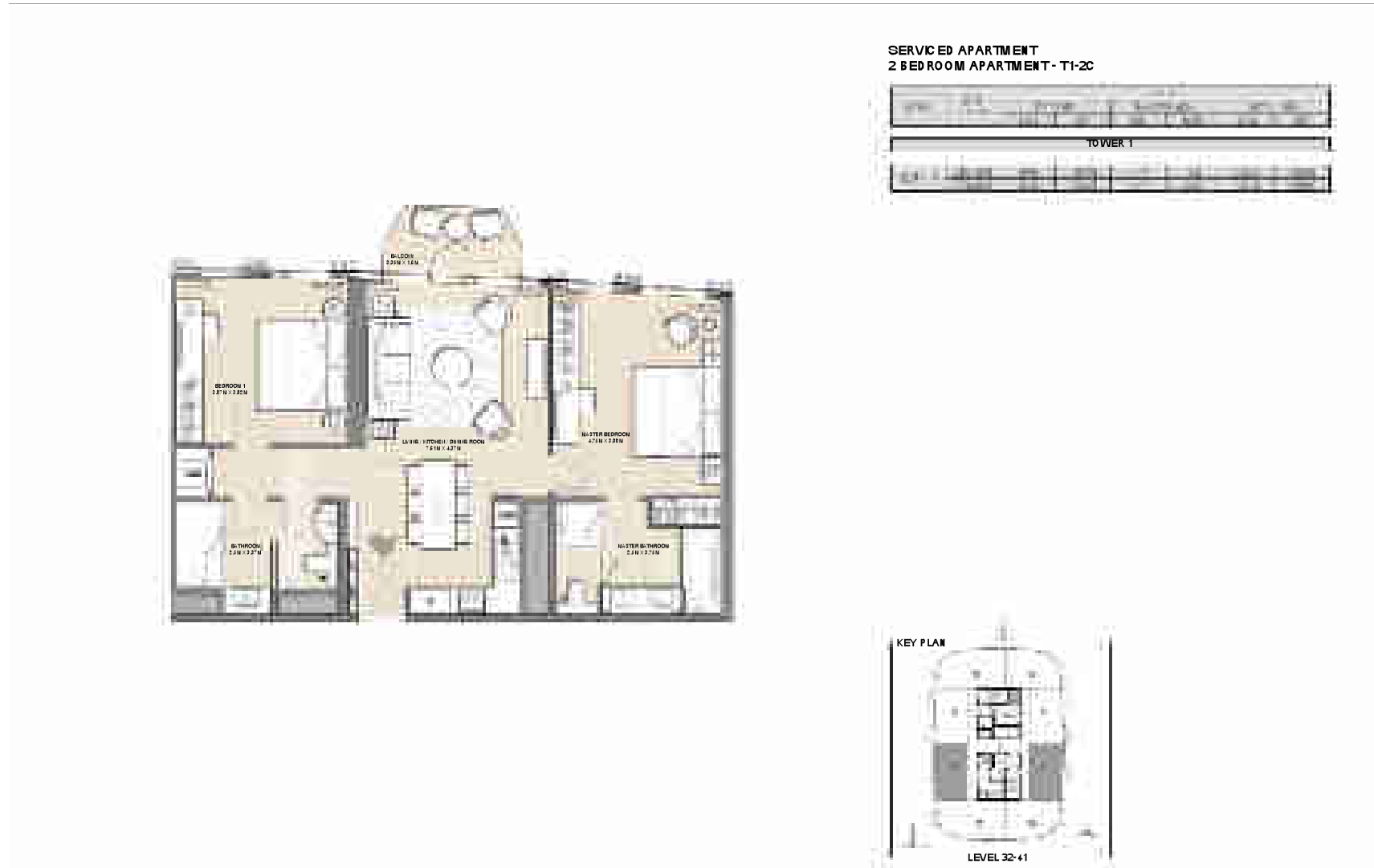
FLOOR PLAN 1. All dimensions are in imperial and metric, and measured from finish to finish excluding construction tolerances. 2. All materials, dimensions, and drawings are approximate only. 3. Information is subject to change without notice, at developer's absolute discretion. 4. Actual area may vary from the stated area. 5. Drawings not to scale. 6. All images used are for illustrative purposes only and do not represent the actual size, features, specifications, fittings, and furnishings. 7. The developer reserves the right to make revisions / alterations, at it's absolute discretion, without any liability whatsoever.





ADDRESS HARBOUR POINT

DUBAI CREEK HARBOUR



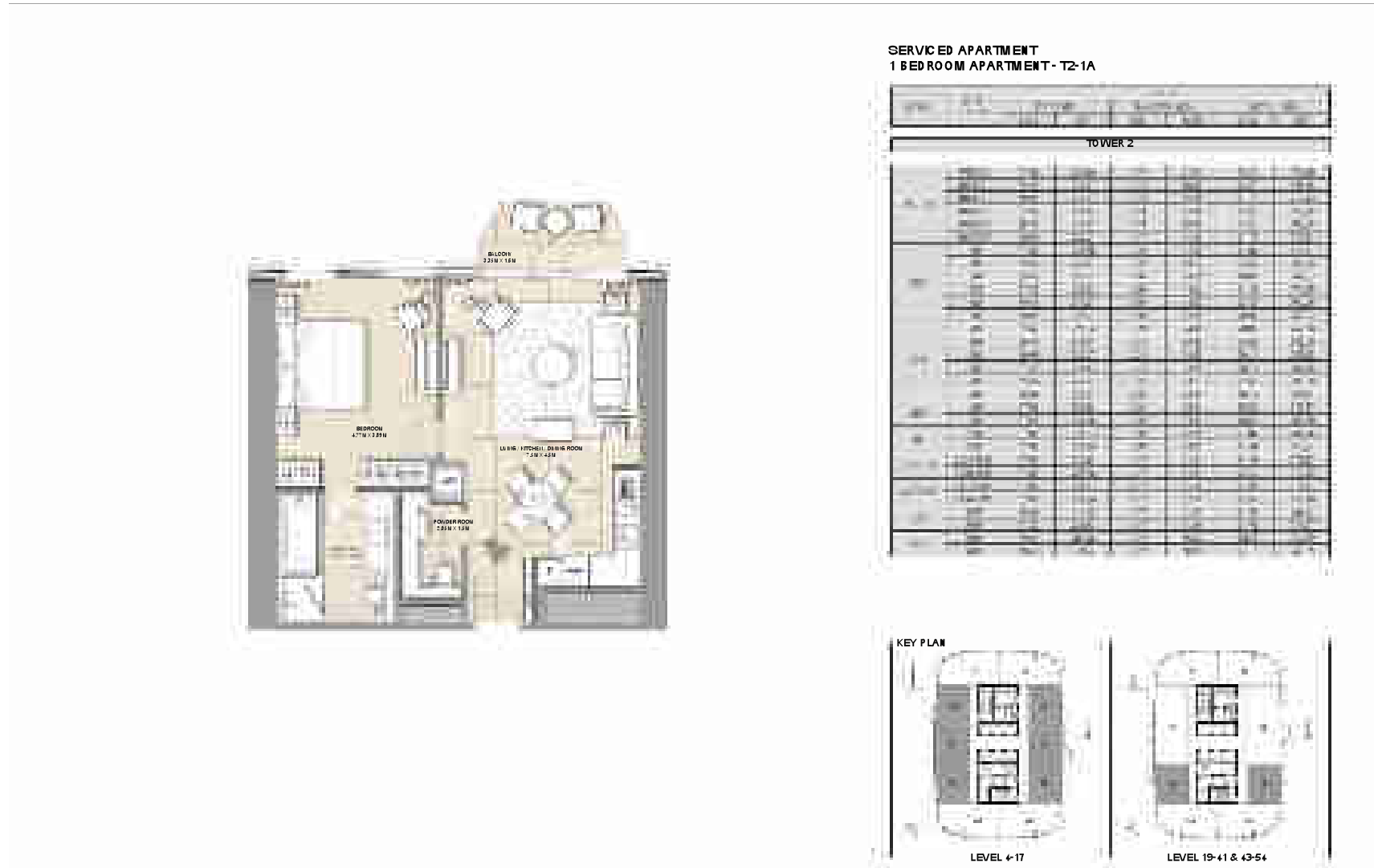
FLOOR PLAN 1. All dimensions are in imperial and metric, and measured from finish to finish excluding construction tolerances. 2. All materials, dimensions, and drawings are approximate only. 3. Information is subject to change without notice, at developer's absolute discretion. 4. Actual area may vary from the stated area. 5. Drawings not to scale. 6. All images used are for illustrative purposes only and do not represent the actual size, features, specifications, fittings, and furnishings. 7. The developer reserves the right to make revisions / alterations, at it's absolute discretion, without any liability whatsoever.





ADDRESS HARBOUR POINT

DUBAI CREEK HARBOUR



FLOOR PLAN 1. All dimensions are in imperial and metric, and measured from finish to finish excluding construction tolerances. 2. All materials, dimensions, and drawings are approximate only. 3. Information is subject to change without notice, at developer's absolute discretion. 4. Actual area may vary from the stated area. 5. Drawings not to scale. 6. All images used are for illustrative purposes only and do not represent the actual size, features, specifications, fittings, and furnishings. 7. The developer reserves the right to make revisions / alterations, at its absolute discretion, without any liability whatsoever.



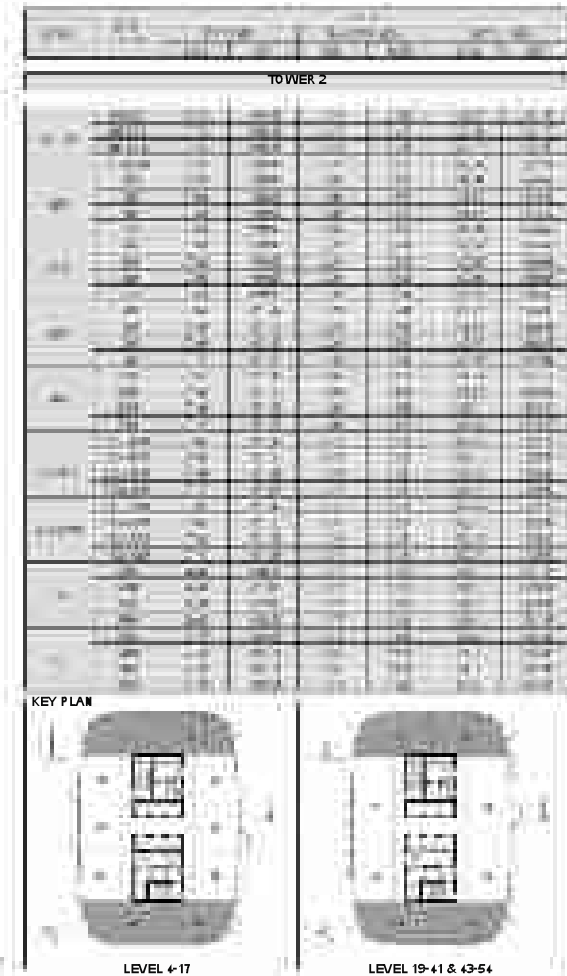


ADDRESS HARBOUR POINT

DUBAI CREEK HARBOUR



SERVICED APARTMENT 2 BEDROOM APARTMENT - T2-2A



FLOOR PLAN 1. All dimensions are in imperial and metric, and measured from finish to finish excluding construction tolerances. 2. All materials, dimensions, and drawings are approximate only. 3. Information is subject to change without notice, at developer's absolute discretion. 4. Actual area may vary from the stated area. 5. Drawings not to scale. 6. All images used are for illustrative purposes only and do not represent the actual size, features, specifications, fittings, and furnishings. 7. The developer reserves the right to make revisions / alterations, at its absolute discretion, without any liability whatsoever.





ADDRESS HARBOUR POINT

DUBAI CREEK HARBOUR



FLOOR PLAN 1. All dimensions are in imperial and metric, and measured from finish to finish excluding construction tolerances. 2. All materials, dimensions, and drawings are approximate only. 3. Information is subject to change without notice, at developer's absolute discretion. 4. Actual area may vary from the stated area. 5. Drawings not to scale. 6. All images used are for illustrative purposes only and do not represent the actual size, features, specifications, fittings, and furnishings. 7. The developer reserves the right to make revisions / alterations, at its absolute discretion, without any liability whatsoever.

