



MOTOR CITY  
HILLS

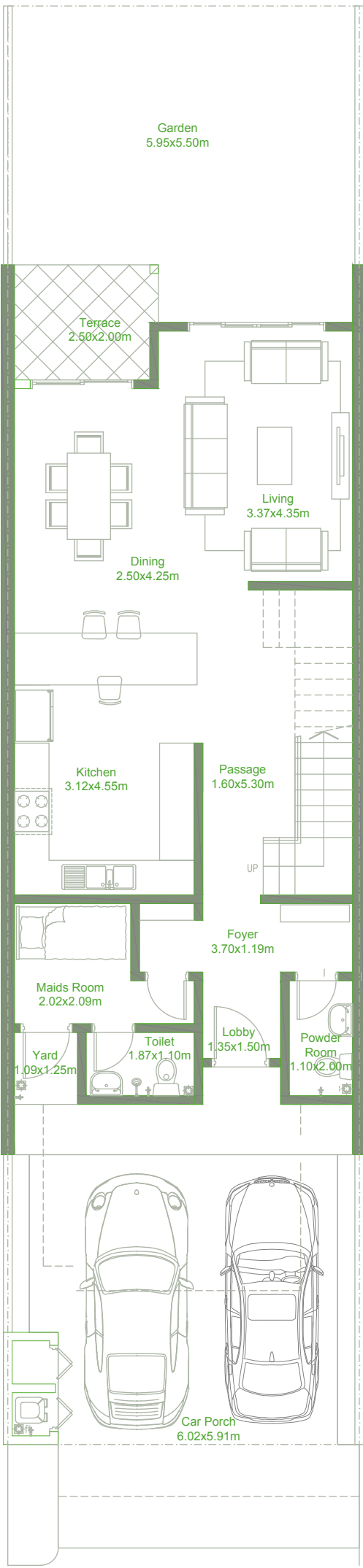
FLOORPLAN



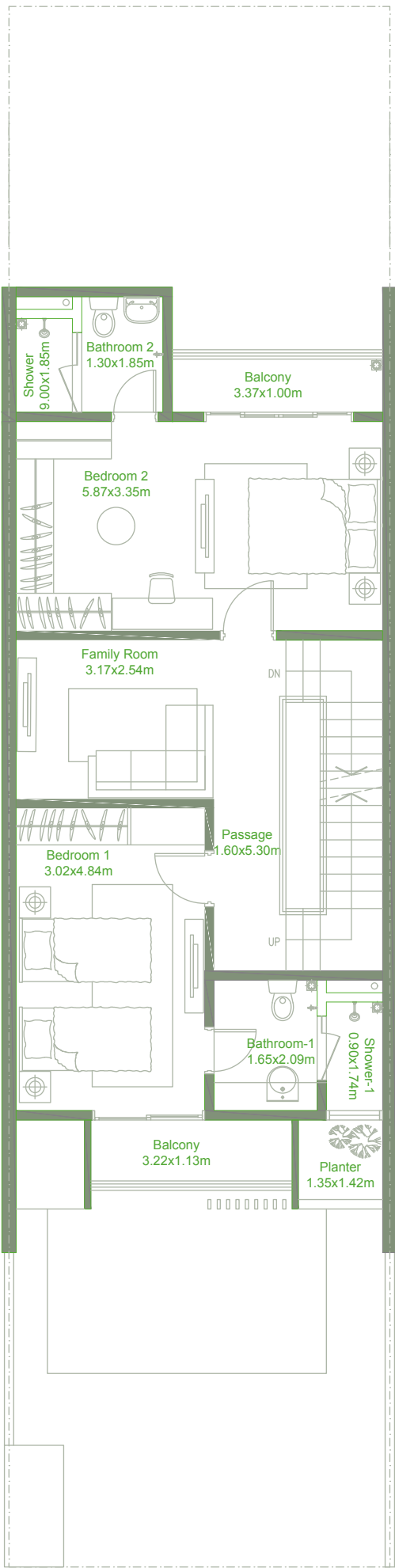
# Townhouse

## TYPE A

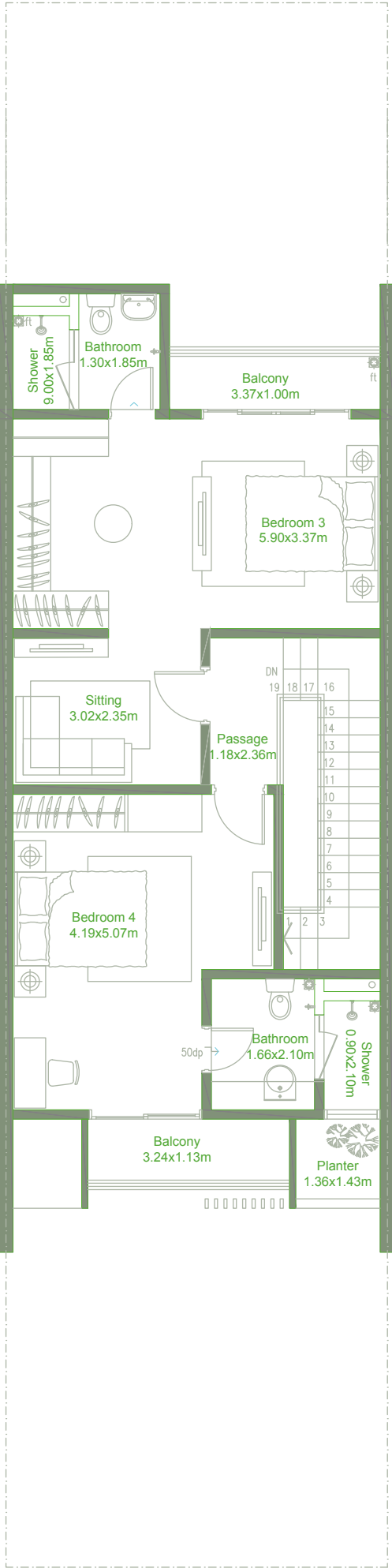
Total gross floor area: 279 m2 (3,002 sq.ft.)  
4 bedrooms + family room + maid's room



Ground Floor



First Floor



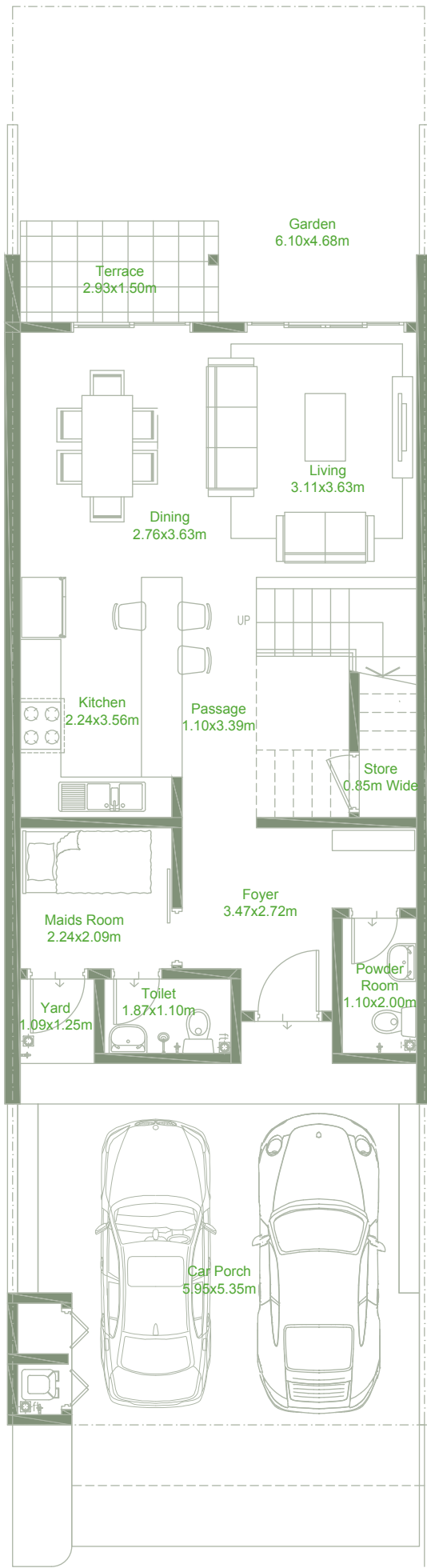
Second Floor

\* All images used are for illustrative purposes only and do not represent the actual size, features, specifications, fittings and furnishing. All materials, dimensions, and drawings are approximate only.

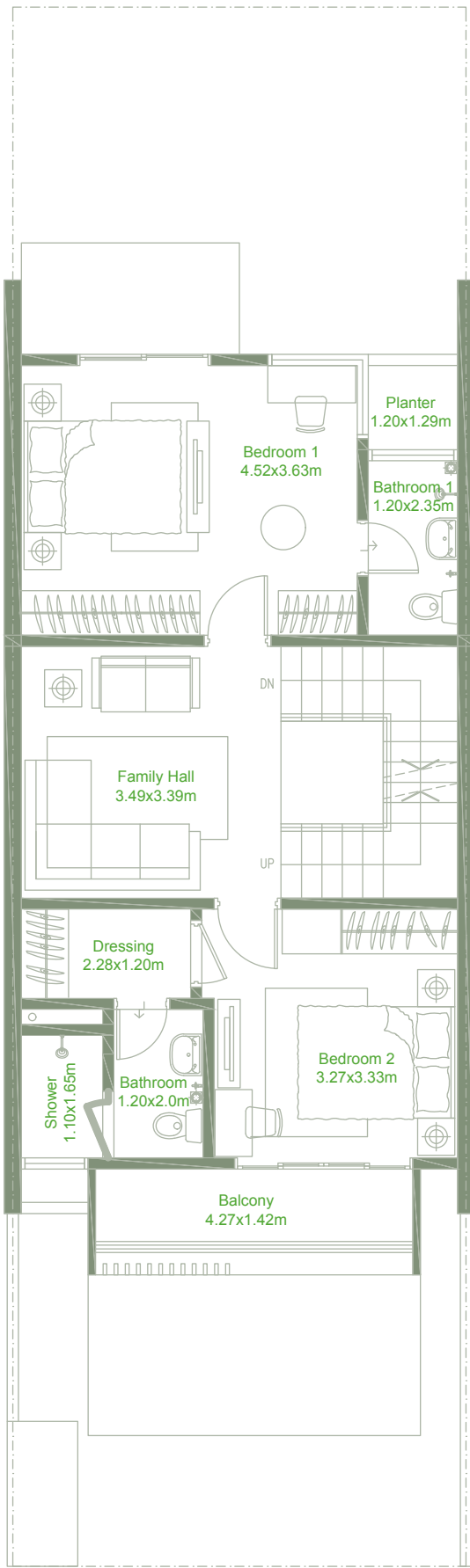
Townhouse

TYPE B

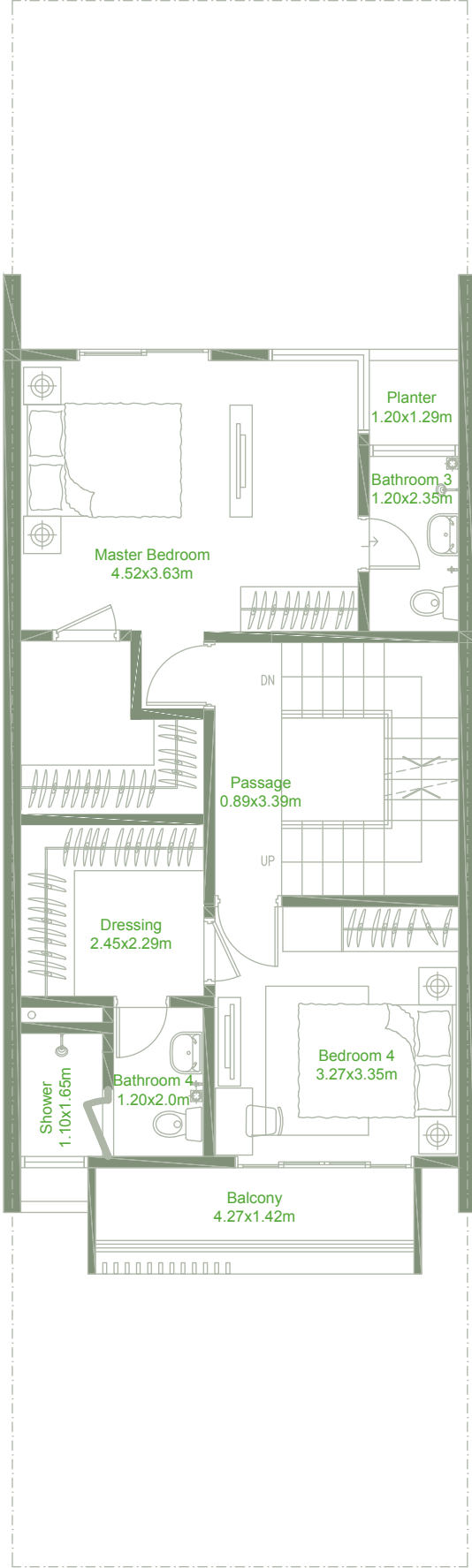
Total gross floor area: 243 m<sup>2</sup> (2,615 sq.ft. )  
4 bedrooms + family room + maid's room



Ground Floor



First Floor



Second Floor

\* All images used are for illustrative purposes only and do not represent the actual size, features, specifications, fittings and furnishing. All materials, dimensions, and drawings are approximate only.