



**DAR AL ARKAN**



TOWER  
**DA VINCI**  
*Interiors by*  
**PAGANI**

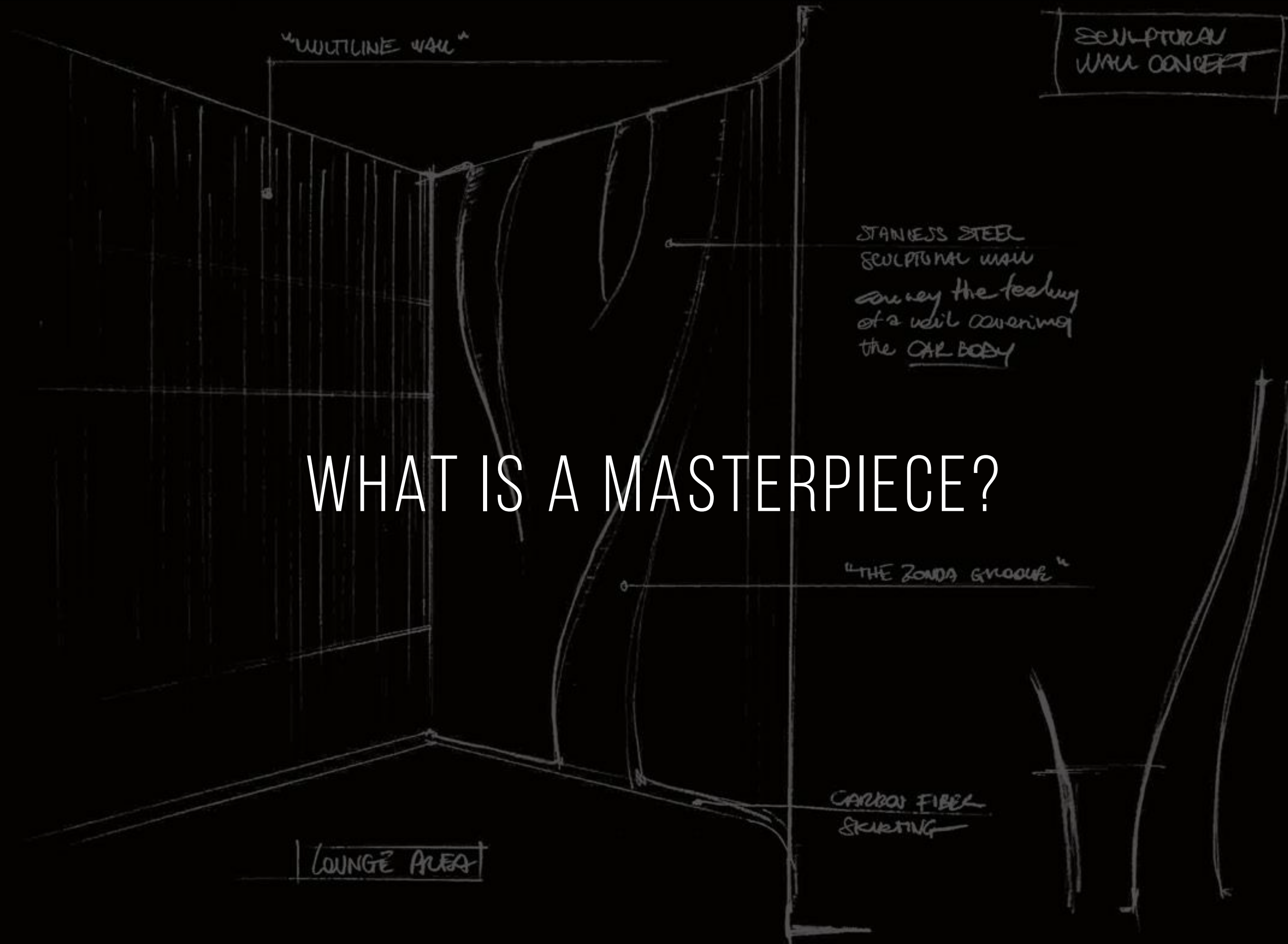
Located in J One Tower B

PAGANI

DAR AL ARKAN

“Art and science are disciplines  
that can walk hand in hand”

*Leonardo Da Vinci*

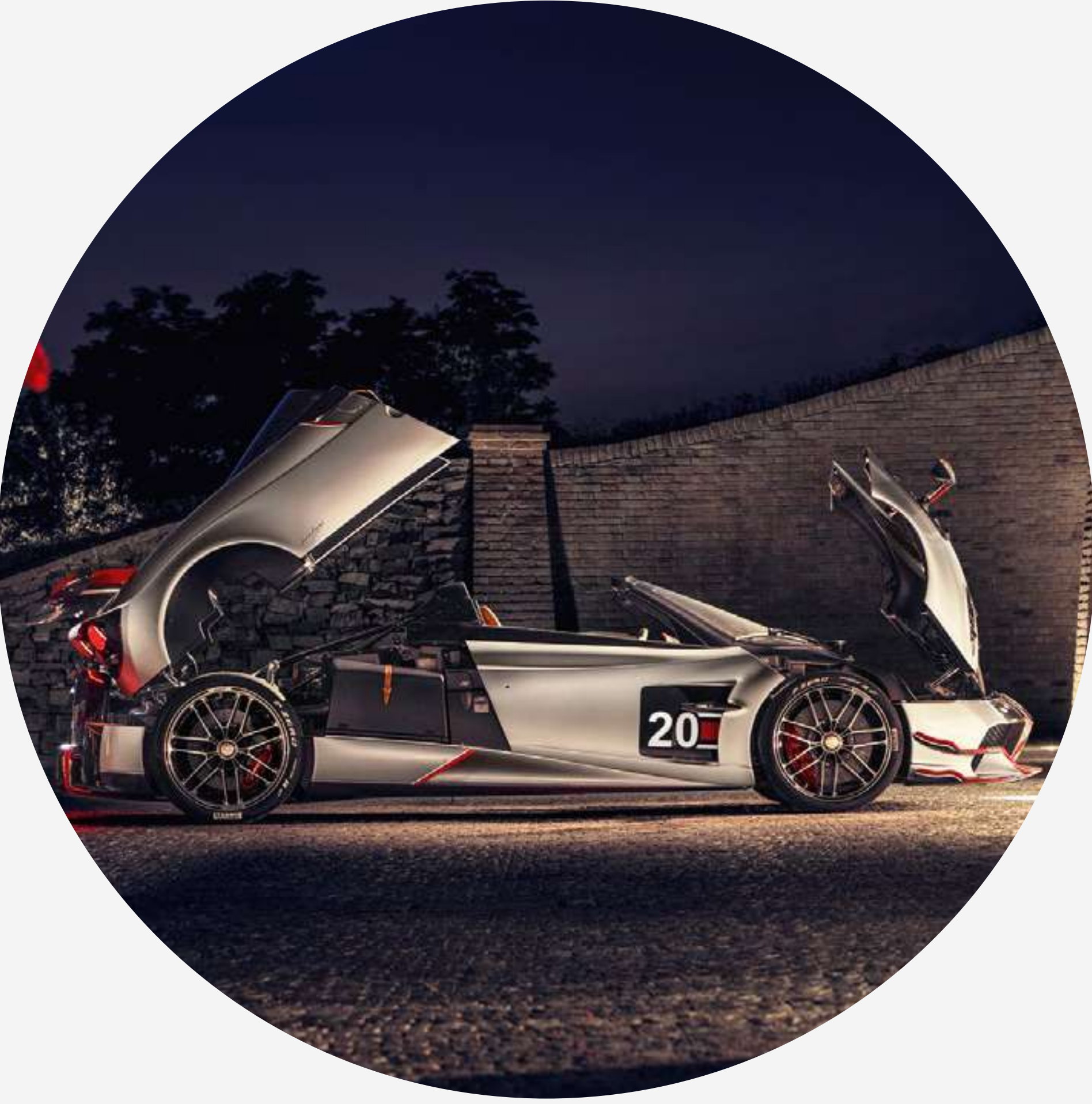
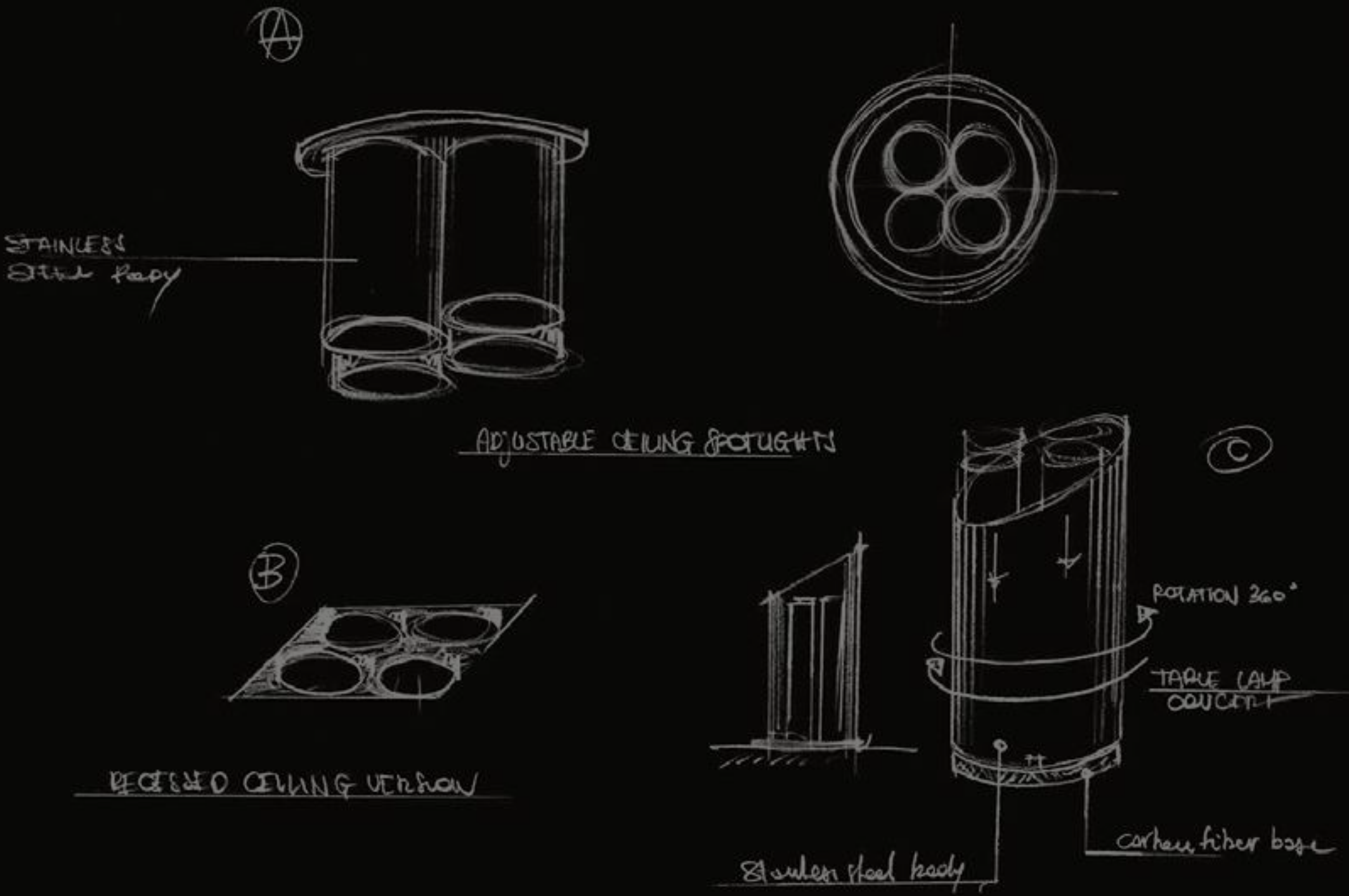


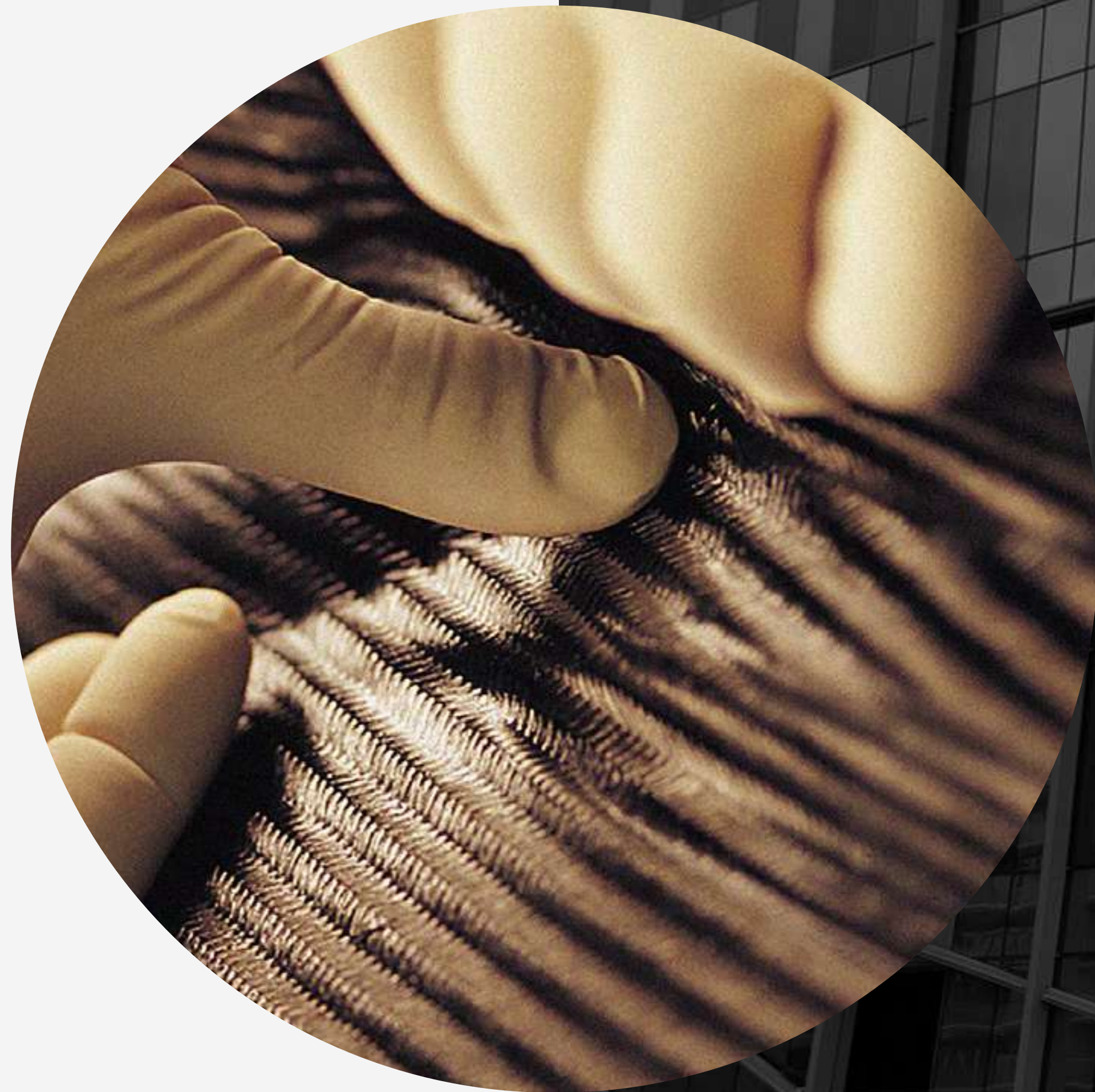
# WHAT IS A MASTERPIECE?

IS IT MAGNETIC *beauty* MADE OF SINUOUS LINES?



IS IT AN ENGINEERING *marvel*  
PURSUING UNPRECEDENTED PERFORMANCES?





IS IT TAILOR-MADE *details* CRAFTED  
TO EXTREME PERFECTION?

IT IS ALL OF IT. AND WAY MORE.



DAR AL ARKAN





# CREATURES *of* ART

---



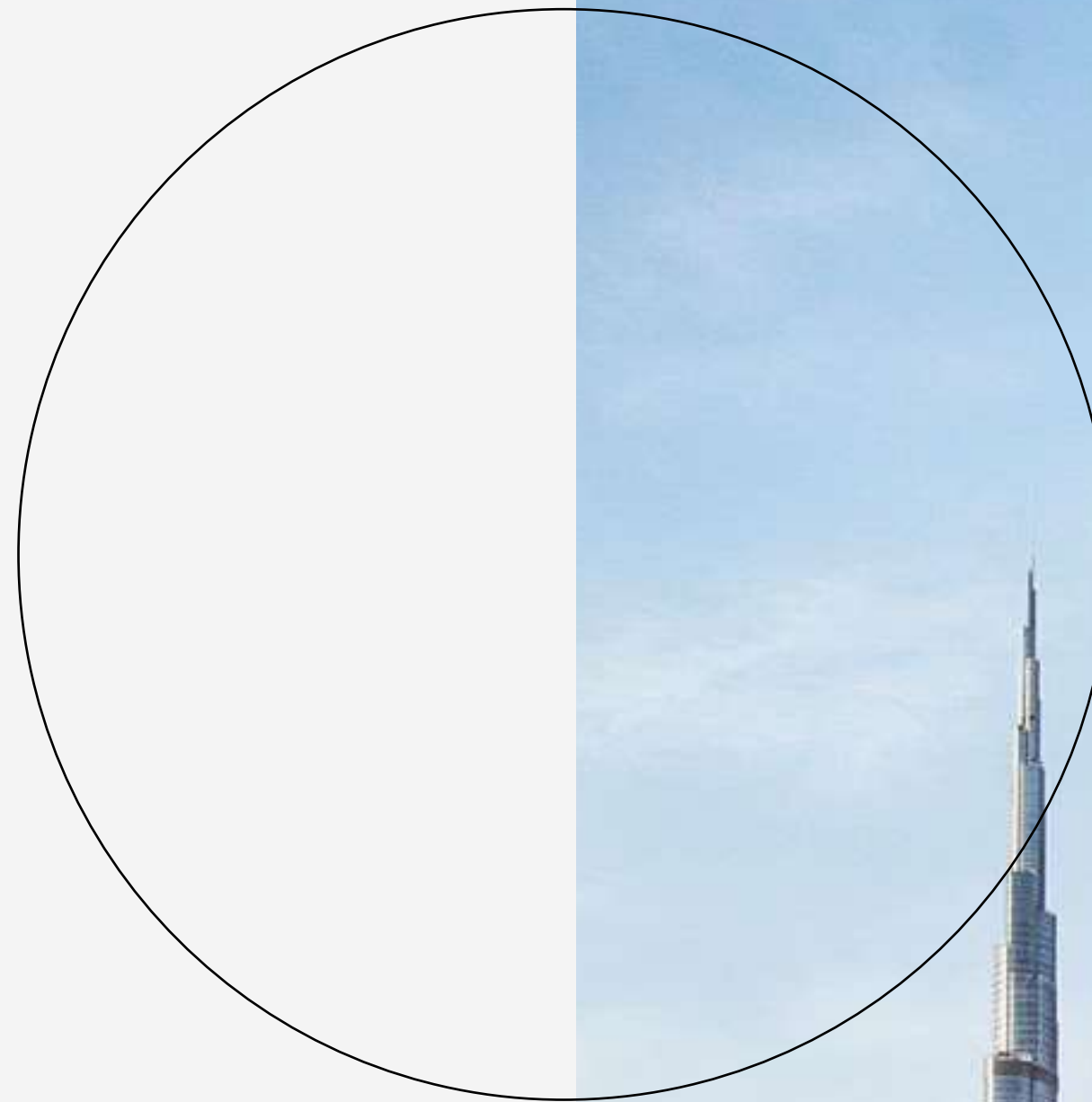
Horacio Pagani had a dream, and his dream was to create the most beautiful car in the world. Not only he succeeded, but he created a universe that goes beyond the automotive field, a dimension that only few can aspire to. With Leonardo Da Vinci's intuition in mind, Horacio blended beauty and function together, giving life to the unprecedented world of Pagani.



# THE SHAPE OF *speed*

---

Pagani's first residences ever are brought to life in a unique tower. The building design is one that makes your head turn: the instability of lines, a strong uneven approach, transparency and hidden balances create a dynamic effect like no other in the surroundings. But it's when you get closer that you discover the pearl, an incredible suspended sphere that defies gravity. The tower is a true geometric symphony of perfection with 19 floors of residential masterpieces, 3 basement levels and a majestic ground floor.



# AT THE CORE OF *contemporaneity*

Dubai is likely becoming the art capital of the 21st century. Home to the most prominent exhibitions, fashion shows, arts and cultural events, DaVinci Tower sits at the heart of it all.

The building is directly by the Dubai Canal, overlooking the world's tallest building Burj Khalifa and a stone throw away from Marasi Business Bay. A prime location filled with a unique mix of aesthetic residential and commercial towers, attracting the most affluent people from around the world.



# LOCATION

DIRECTLY ON  
**THE DUBAI CANAL**

A 3.2 Km-long tourist landmark

5 MINUTES  
**THE DUBAI MALL**

The world's largest retail & entertainment destination

4 MINUTES  
**THE DUBAI FOUNTAIN**

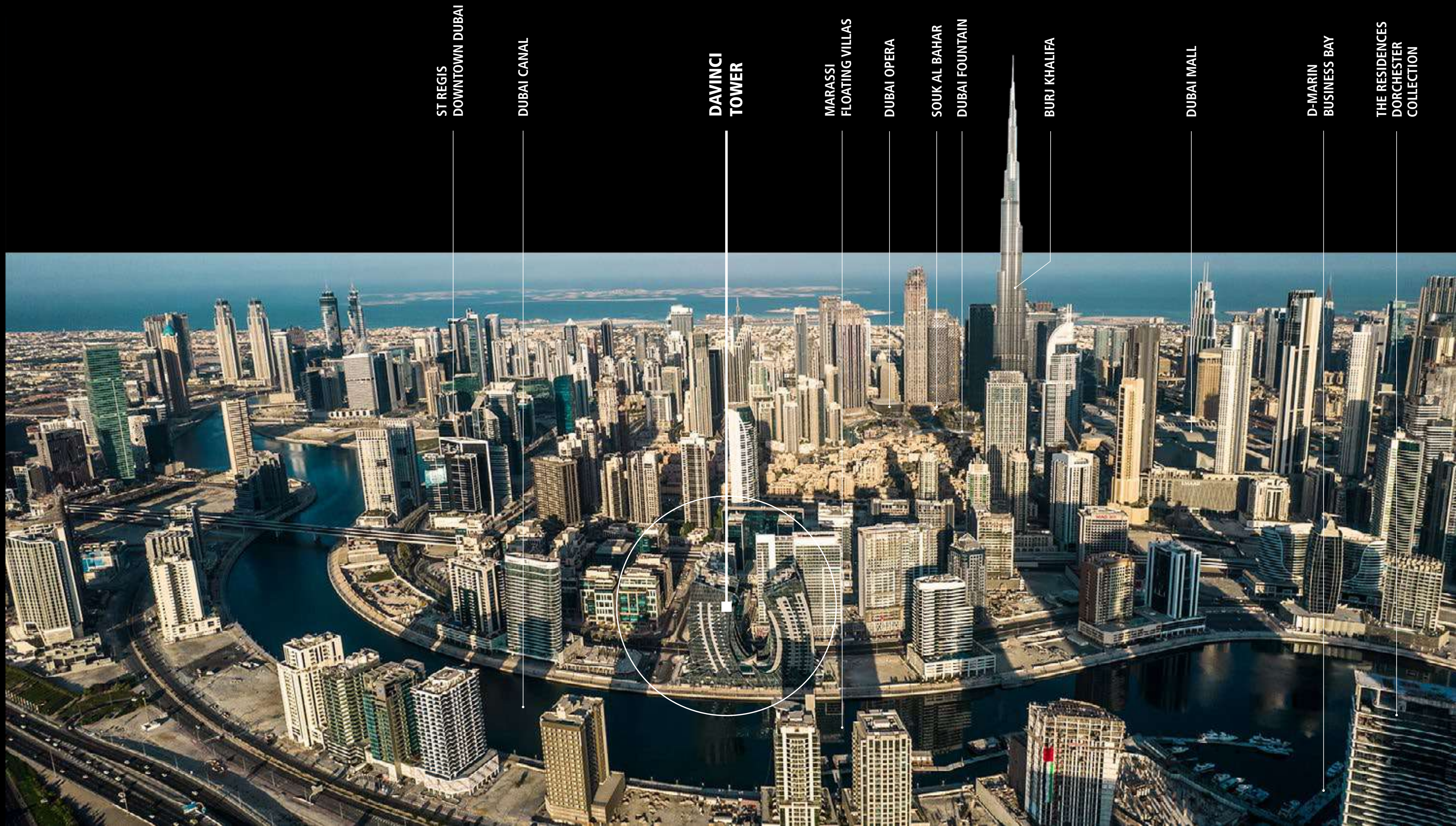
The world's tallest performing fountain with a captivating water, music & light spectacle

7 MINUTE  
**BURJ KHALIFA**

The world's tallest building

7 MINUTES  
**THE DUBAI OPERA**

2000 seat multi-format venue



ST REGIS  
DOWNTOWN DUBAI

DUBAI CANAL

DAVINCI  
TOWER

MARASSI  
FLOATING VILLAS

DUBAI OPERA

SOUK AL BAHAR

DUBAI FOUNTAIN

BURJ KHALIFA

DUBAI MALL

D-MARIN  
BUSINESS BAY

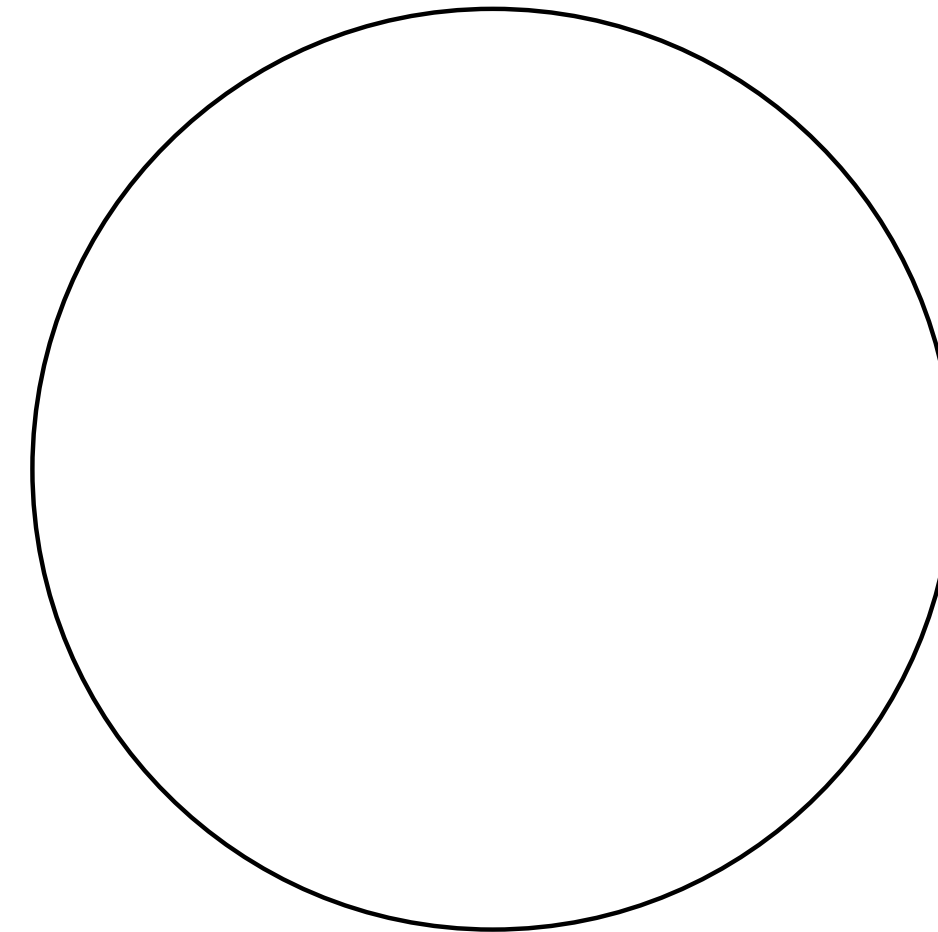
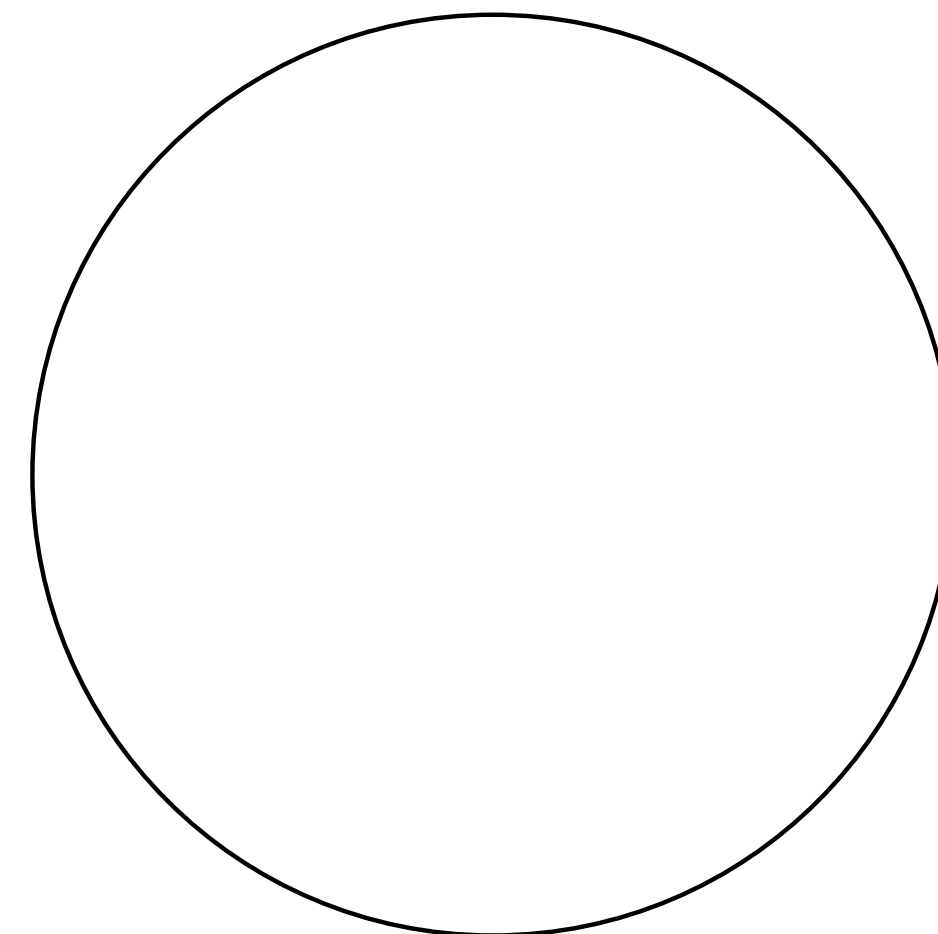
THE RESIDENCES  
DORCHESTER  
COLLECTION

# BREATHTAKING *views*

---

The building sits in a strategic position, letting you enjoy the best of Dubai's panoramas. On the South-East side you can indulge in the soothing view of water, with the Canal, the floating villas and the Business Bay at your feet. On the North side, the Burj Khalifa stands just outside of your window.





# LIVING *above luxury*

---

For the first time in the world, Pagani's essence takes the shape of a living space: DaVinci Tower is a residential building in downtown Dubai with interiors designed by Pagani. Every detail is crafted to obsession, every material is of the finest quality, every line is designed with taste and harmony, resulting in the unique experience of inhabiting a masterpiece.







## ART ELEVATES *Life*

The magnificent residences set new standards for human living. The expansive 2 - 4 bedroom marble homes are designed with private outdoor spaces and open flowing light-filled interiors, with panoramic views of the canal and Downtown Dubai.

Arrive at your doorstep with luxurious elevators dedicated to residents and guests only, then make yourself at home with advanced domotics that responds to any of your desires.





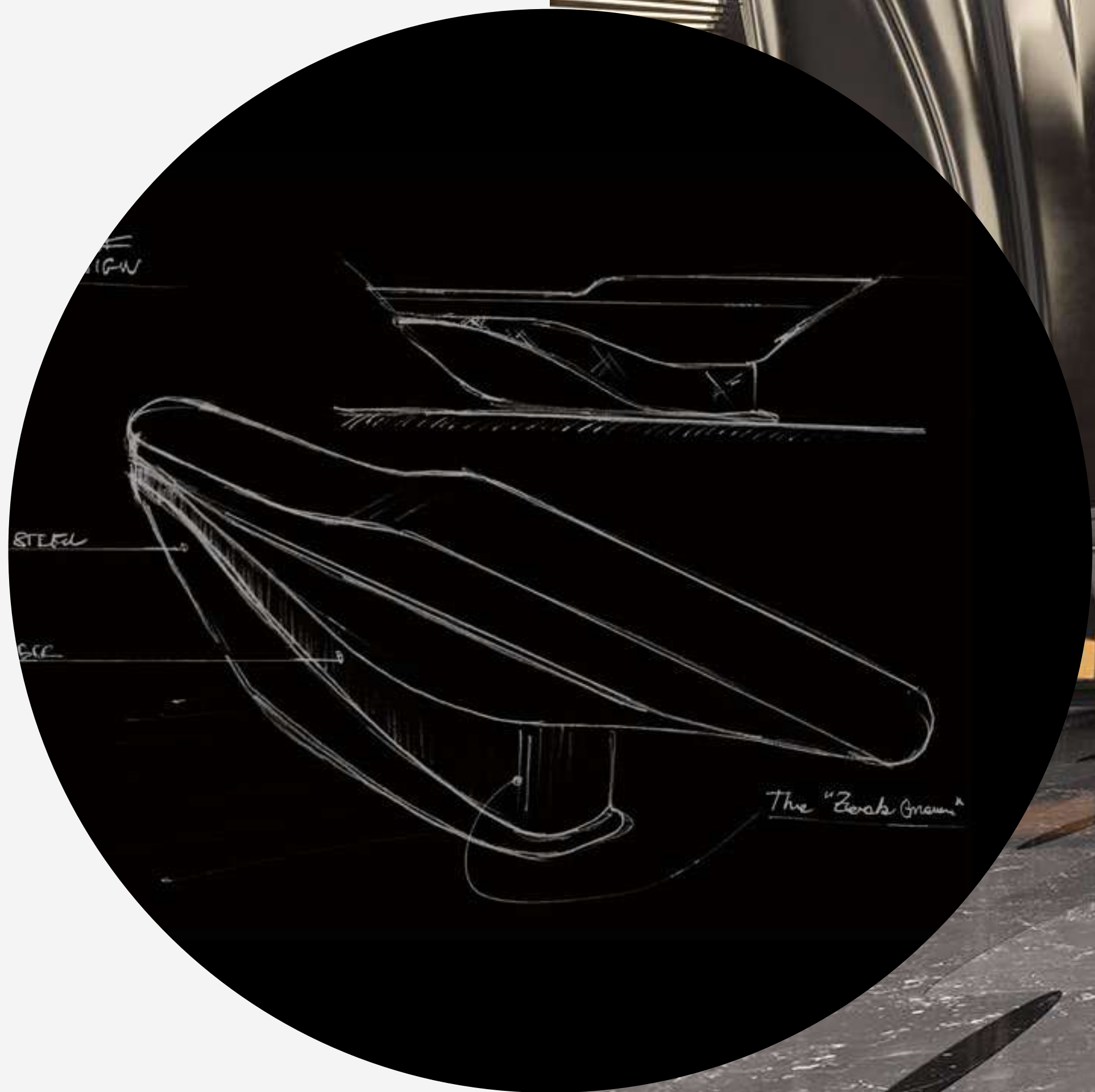
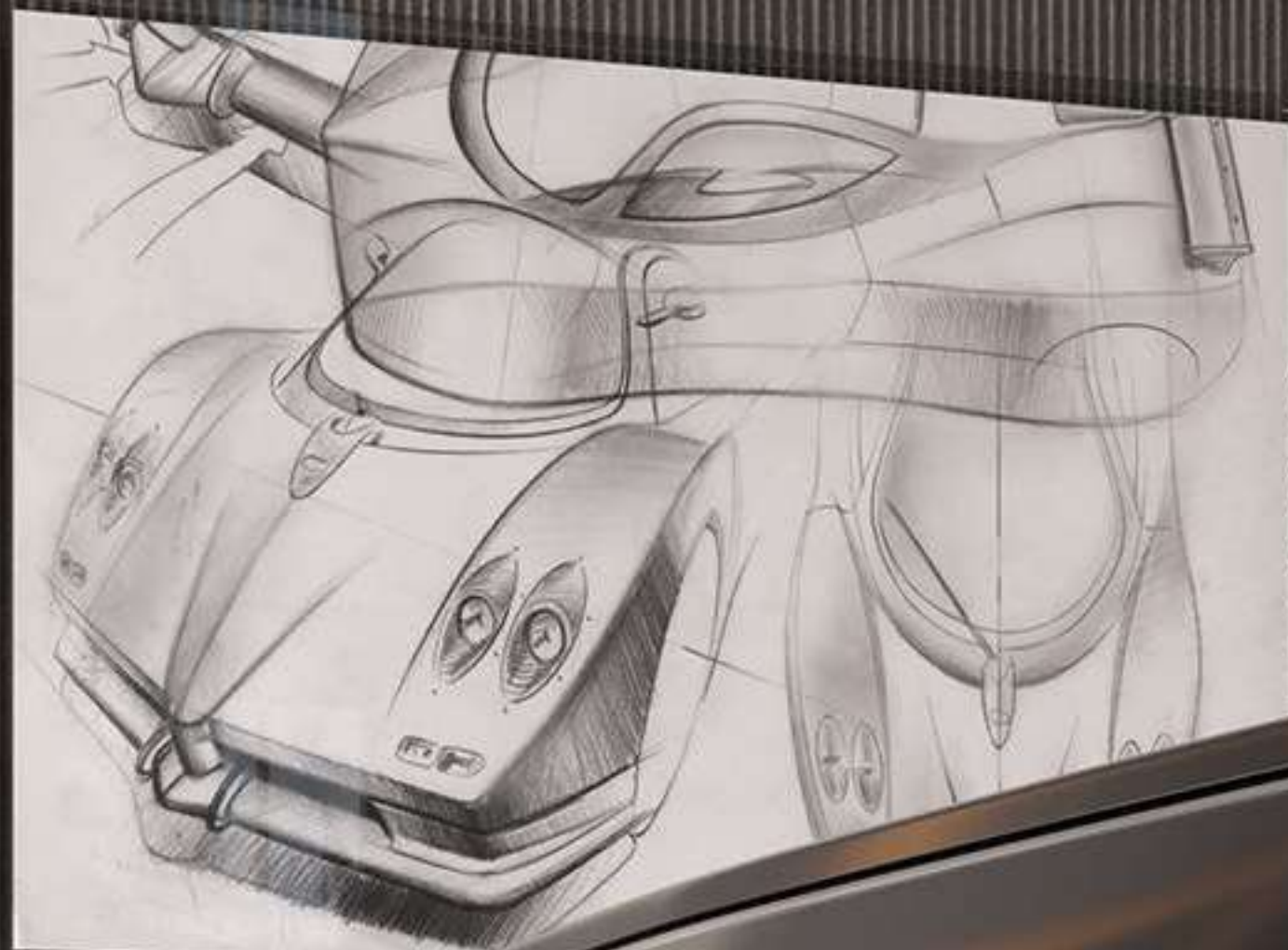
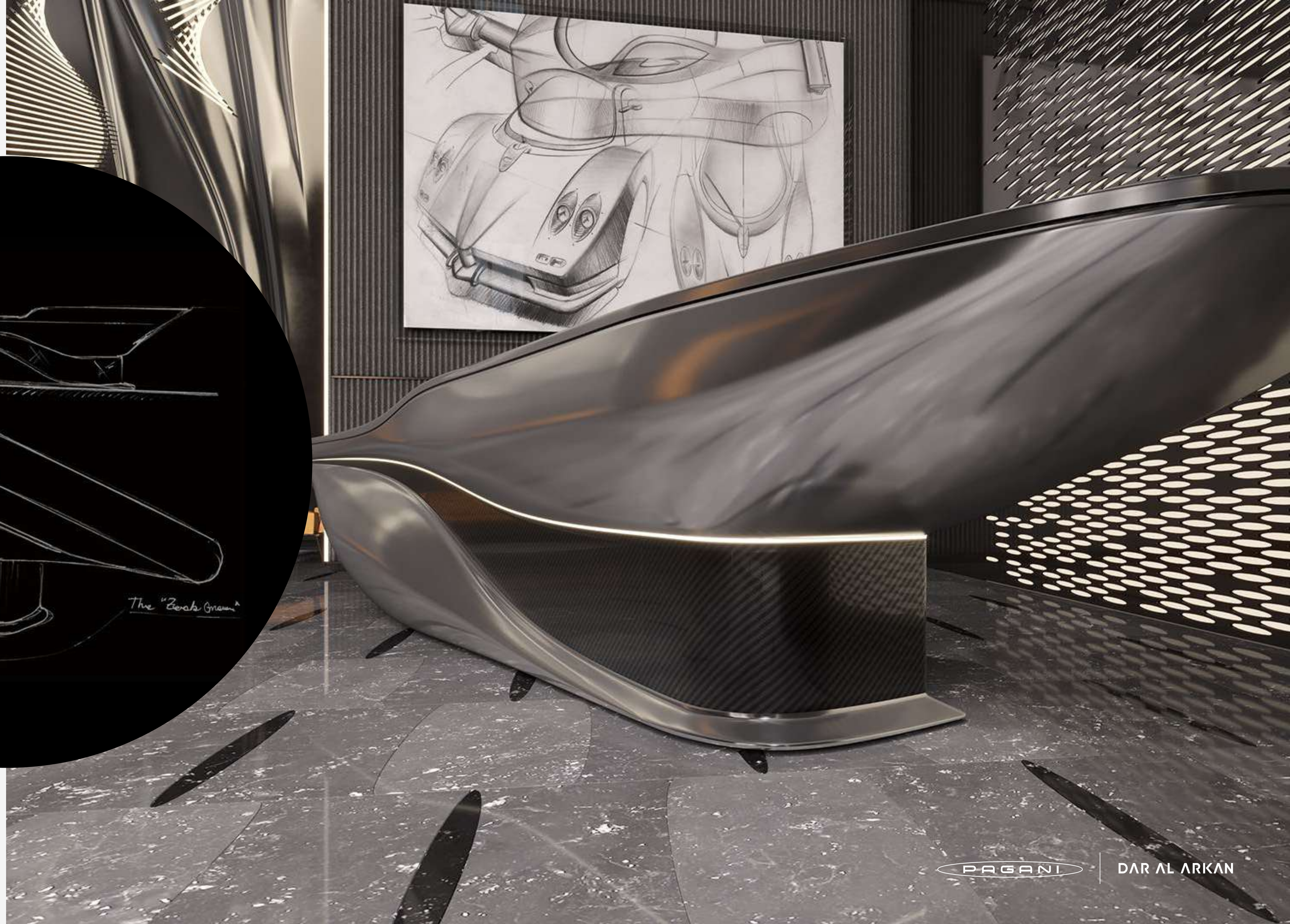


## THE STEEL ATRIUM

# *Beauty* IS A SHARP BLADE

Inspired by the sinuous curves of Pagani Design, the Steel Atrium represents the epitome of art and luxury. From the moment you walk in, you are are plunged in a masterpiece made of stainless steel, carbon fibers, lush leather and kinetic chandeliers, where the beauty of engineering evokes the most prestigious lifestyle.





## THE POOL

*Dive* INTO CALMNESS

Peace of mind is within reach when you are surrounded by harmony and balance.

Imagine a relaxing heaven where every shape is designed to please your senses: discover the pool area at the top of the tower, an urban jungle to refresh your ideas after a busy day.



# CONCIERGERIE, *crafted*

---

Nothing is left behind when you live in a world of exclusivity. The residential services will meet any of your desires: our highly professional team will be available 24/7 to help you with housekeeping, arranging dinner plans or making the reservations you need.





# *Inspired* TO WELL-BEING

---

Keep yourself fit and healthy, without having to leave your home. You can workout in a modern gym with the newest equipments and plenty of space to exercise, then give yourself a treat in the sauna and steam rooms for men and women.

A great way to start your day, or to end it.









# RESIDENCES SPECIFICATIONS

## Foyer – Living Area – Dining Area

Marble flooring and skirting  
Gypsum ceiling finished with paint  
Paint with accent wallpaper  
Wood paneling in selected areas

## Kitchen

Marble flooring and skirting  
Paint and quartz walls  
Gypsum ceiling finished with paint  
Silestone high quality quartz counter top  
Lacquered paint cabinets  
Fridge, Oven, Hob, Hood, Microwave,  
Dishwasher, Washing Machine,  
Beverage Cooler  
Miele, Bosch Premium Line or Equivalent

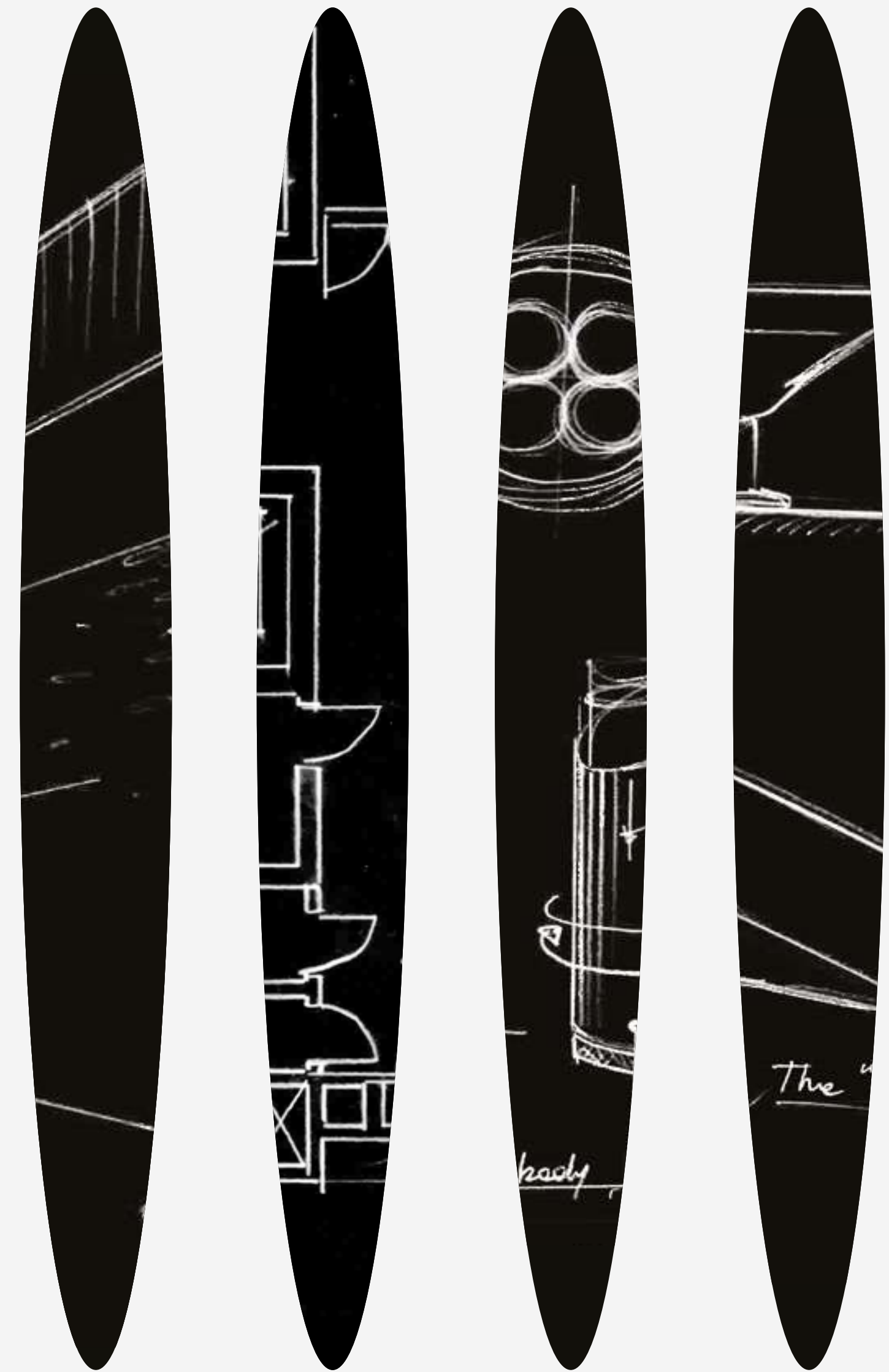
## Bedrooms

Semi Engineered wood flooring and skirting  
Paint with accent wallpaper  
Gypsum ceiling finished with paint  
Built-in lacquered joinery

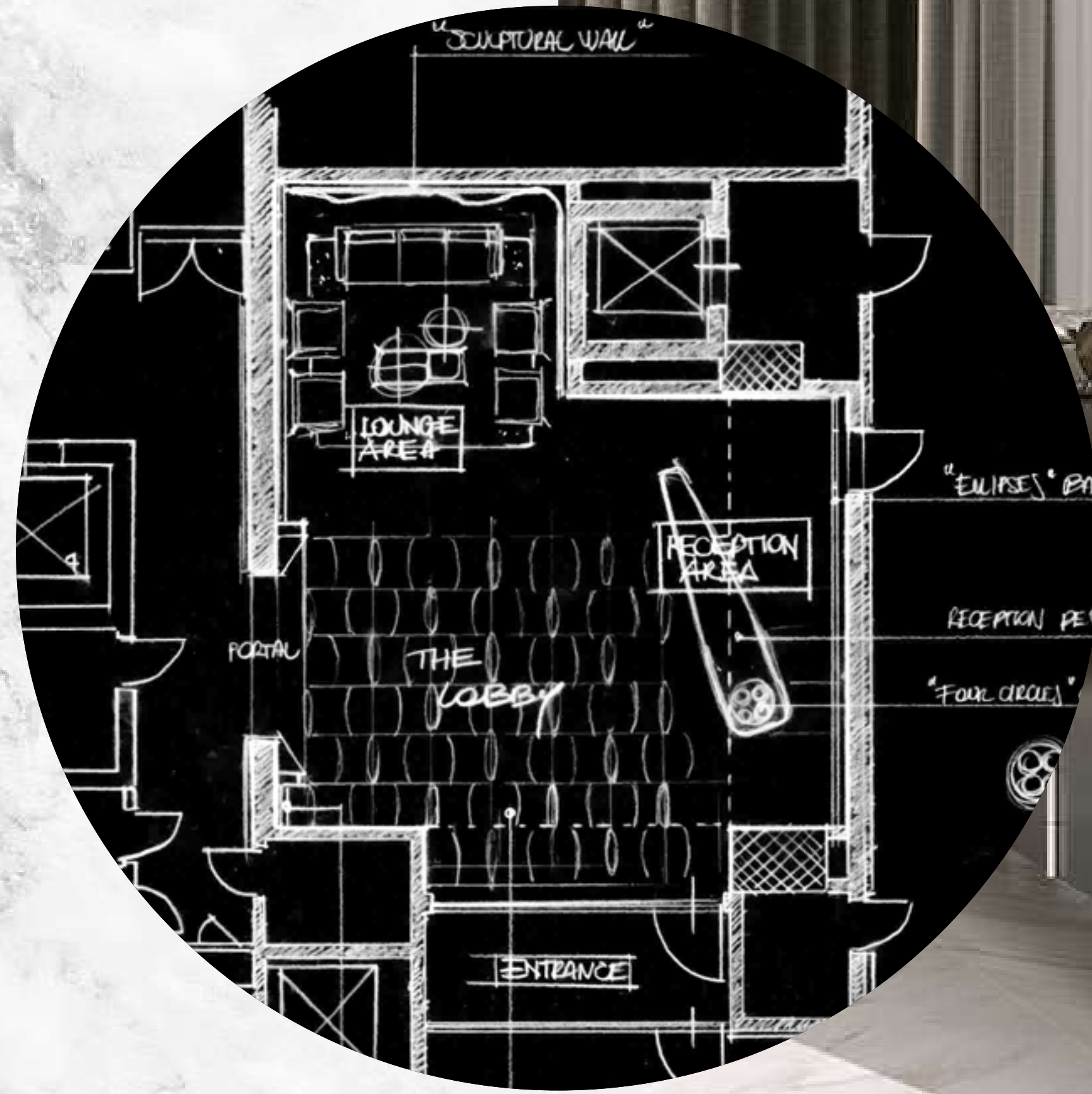
## Bathrooms

Marble flooring and skirting  
Marble / wallpaper walls  
Moisture resistant gypsum ceiling finished  
with paint  
Marble counter top  
Lacquered / Veneer joinery  
Gessi, Newform or equivalent  
sanitary fixtures  
Kohler, Duravit, Geberit or equivalent  
sanitaryware

All pictures, plans, layouts, information, data and details included in this brochure are indicative only and may change at any time up to the final 'as built' status in accordance with final designs of the project, regulatory approvals and planning permissions. All accessories and interior finishes such as wallpaper, chandeliers, furniture, electronics, white goods, curtains, hard and soft landscaping, pavements, features, gym, swimming pool(s) and other elements displayed in the brochure, or within the show apartment or between the plot boundary and the unit, are not part of the unit and are shown for illustrative purposes only.

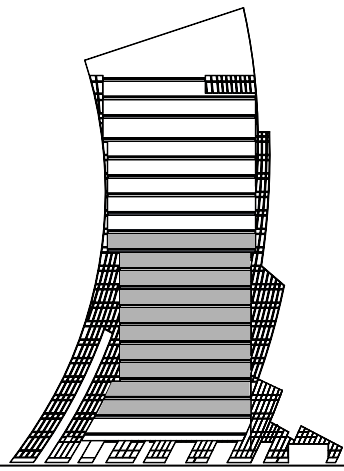


# FLOOR PLANS



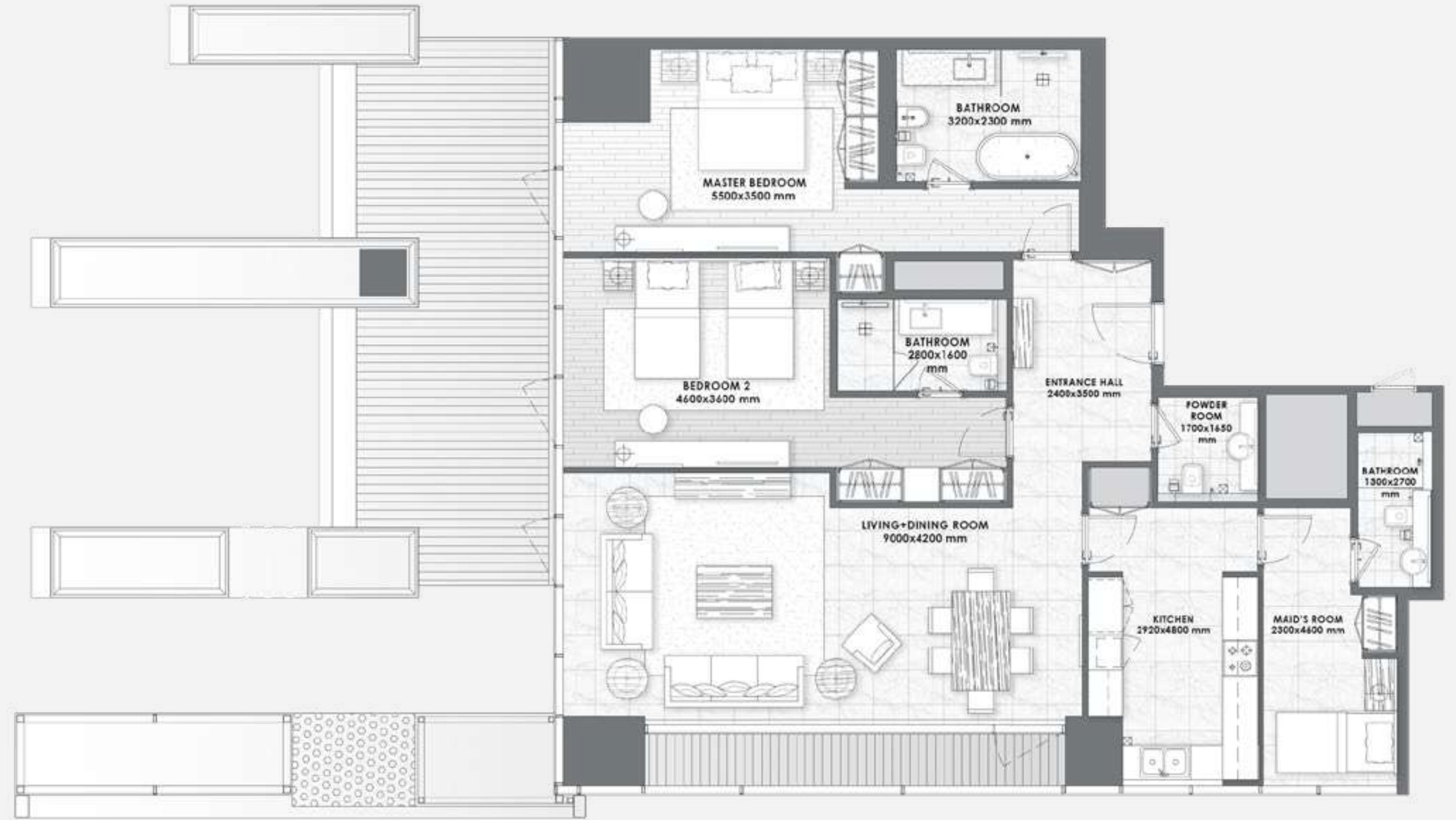
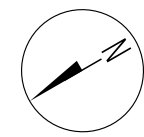
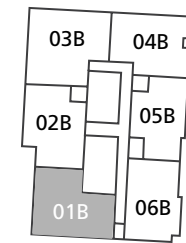
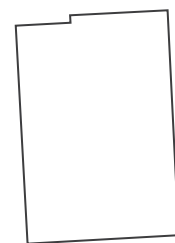
# 2 BEDROOMS

## - Type 7 -



**FLOORS**  
2 to 10

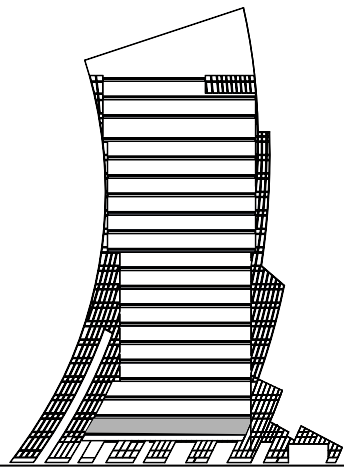
Unit Area	1,556.89 - 1,570.89 sq.ft.
Balcony Area	208.39 - 416.13 sq.ft.
<b>Total Area</b>	<b>1,765.28 - 1,987.02 sq.ft.</b>



All pictures, plans, layouts, information, data and details included in this brochure are indicative only and may change at any time up to the final 'as built' status in accordance with final designs of the project, regulatory approvals and planning permissions. All accessories and interior finishes such as wallpaper, chandeliers, furniture, electronics, white goods, curtains, hard and soft landscaping, pavements, features, gym, swimming pool(s) and other elements displayed in the brochure, or within the show apartment or between the plot boundary and the unit, are not part of the unit and are shown for illustrative purposes only.

# 2 BEDROOMS

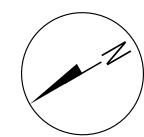
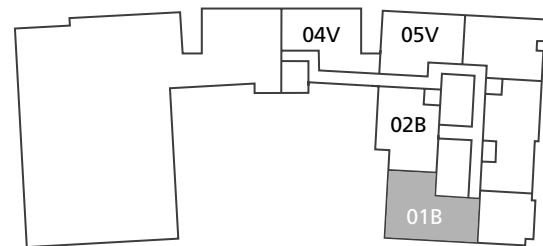
## - Type 7A -



FLOOR

1

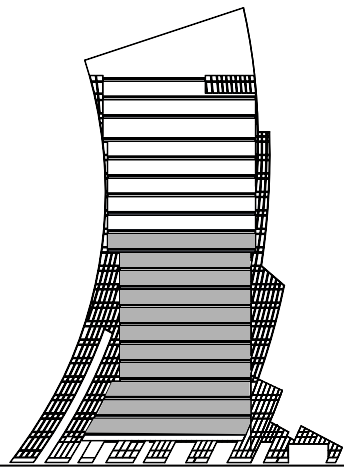
Unit Area	1,739.77 sq.ft.
Balcony Area	797.50 sq.ft.
<b>Total Area</b>	<b>2,537.27 sq.ft.</b>



All pictures, plans, layouts, information, data and details included in this brochure are indicative only and may change at any time up to the final 'as built' status in accordance with final designs of the project, regulatory approvals and planning permissions. All accessories and interior finishes such as wallpaper, chandeliers, furniture, electronics, white goods, curtains, hard and soft landscaping, pavements, features, gym, swimming pool(s) and other elements displayed in the brochure, or within the show apartment or between the plot boundary and the unit, are not part of the unit and are shown for illustrative purposes only.

# 2 BEDROOMS

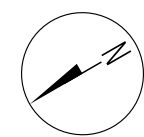
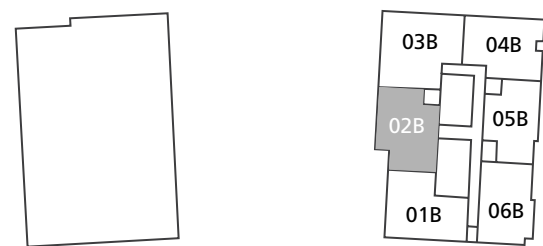
## - Type 8 -



### FLOORS

1 to 10

Unit Area	1,701.56 - 1,713.51 sq.ft.
Balcony Area	137.89 - 608.05 sq.ft.
<b>Total Area</b>	<b>1,848.06 - 2,309.61 sq.ft.</b>

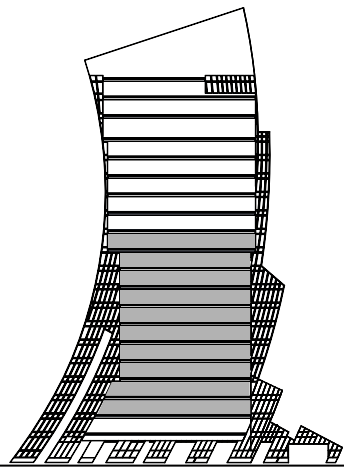


All pictures, plans, layouts, information, data and details included in this brochure are indicative only and may change at any time up to the final 'as built' status in accordance with final designs of the project, regulatory approvals and planning permissions. All accessories and interior finishes such as wallpaper, chandeliers, furniture, electronics, white goods, curtains, hard and soft landscaping, pavements, features, gym, swimming pool(s) and other elements displayed in the brochure, or within the show apartment or between the plot boundary and the unit, are not part of the unit and are shown for illustrative purposes only.



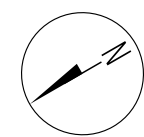
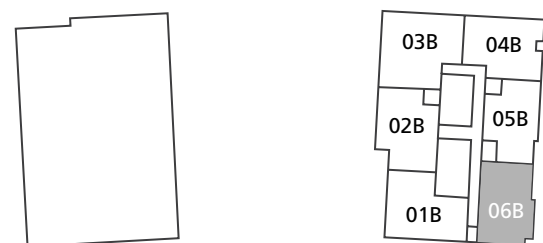
# 2 BEDROOMS

## - Type 9 -



**FLOORS**  
2 to 10

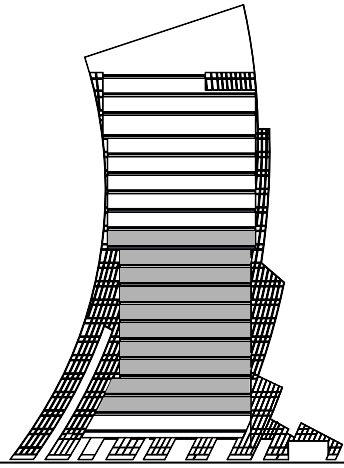
Unit Area	1,464.75 - 1,473.58 sq.ft.
Balcony Area	384.38 - 395.04 sq.ft.
<b>Total Area</b>	<b>1,857.96 - 1,859.79 sq.ft.</b>



All pictures, plans, layouts, information, data and details included in this brochure are indicative only and may change at any time up to the final 'as built' status in accordance with final designs of the project, regulatory approvals and planning permissions. All accessories and interior finishes such as wallpaper, chandeliers, furniture, electronics, white goods, curtains, hard and soft landscaping, pavements, features, gym, swimming pool(s) and other elements displayed in the brochure, or within the show apartment or between the plot boundary and the unit, are not part of the unit and are shown for illustrative purposes only.

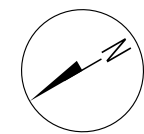
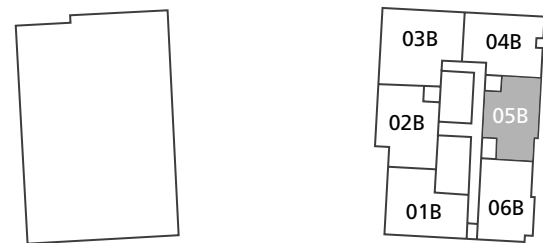
# 2 BEDROOMS

## - Type 10 -



**FLOORS**  
2 to 10

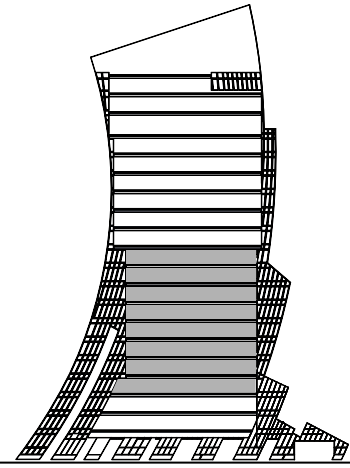
Unit Area	1,570.13 - 1,575.62 sq.ft.
Balcony Area	508.59 sq.ft.
<b>Total Area</b>	<b>2,078.73 - 2,084.22 sq.ft.</b>



All pictures, plans, layouts, information, data and details included in this brochure are indicative only and may change at any time up to the final 'as built' status in accordance with final designs of the project, regulatory approvals and planning permissions. All accessories and interior finishes such as wallpaper, chandeliers, furniture, electronics, white goods, curtains, hard and soft landscaping, pavements, features, gym, swimming pool(s) and other elements displayed in the brochure, or within the show apartment or between the plot boundary and the unit, are not part of the unit and are shown for illustrative purposes only.

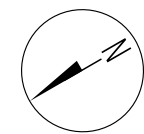
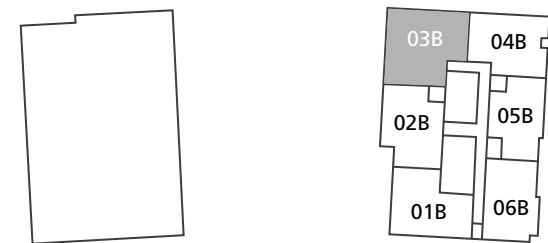
# 2 BEDROOMS

– Type 11 –



**FLOORS**  
3 to 10

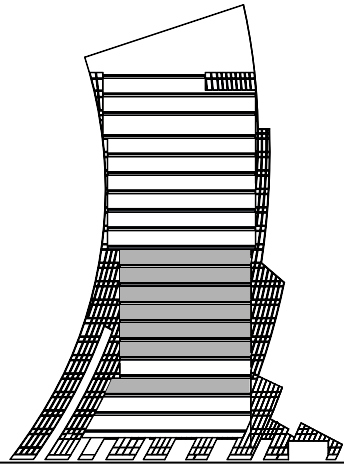
Unit Area	1,670.24 - 1,671.42 sq.ft.
Balcony Area	405.69 - 659.40 sq.ft.
<b>Total Area</b>	<b>2,075.93 - 2,329.96 sq.ft.</b>



All pictures, plans, layouts, information, data and details included in this brochure are indicative only and may change at any time up to the final 'as built' status in accordance with final designs of the project, regulatory approvals and planning permissions. All accessories and interior finishes such as wallpaper, chandeliers, furniture, electronics, white goods, curtains, hard and soft landscaping, pavements, features, gym, swimming pool(s) and other elements displayed in the brochure, or within the show apartment or between the plot boundary and the unit, are not part of the unit and are shown for illustrative purposes only.

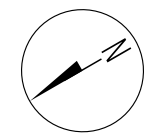
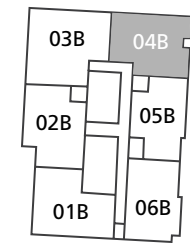
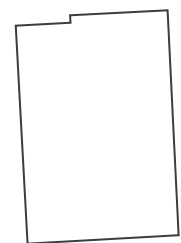
# 2 BEDROOMS

## - Type 12 -



**FLOORS**  
3, 5 to 10

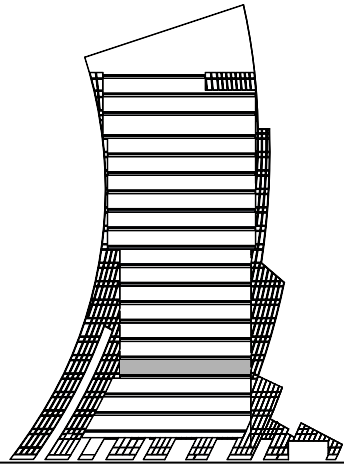
Unit Area	1,657.53 - 1,658.50 sq.ft.
Balcony Area	487.61 - 565.86 sq.ft.
<b>Total Area</b>	<b>2,203.80 - 2,223.61 sq.ft.</b>



All pictures, plans, layouts, information, data and details included in this brochure are indicative only and may change at any time up to the final 'as built' status in accordance with final designs of the project, regulatory approvals and planning permissions. All accessories and interior finishes such as wallpaper, chandeliers, furniture, electronics, white goods, curtains, hard and soft landscaping, pavements, features, gym, swimming pool(s) and other elements displayed in the brochure, or within the show apartment or between the plot boundary and the unit, are not part of the unit and are shown for illustrative purposes only.

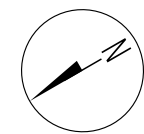
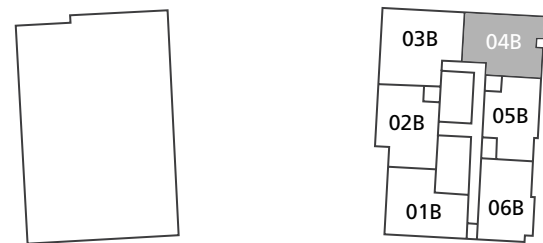
# 2 BEDROOMS

## – Type 13 –



FLOOR  
4

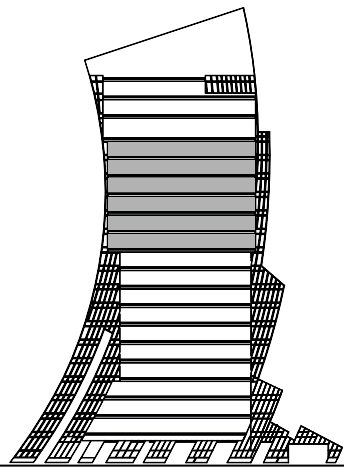
Unit Area	1,549.79 sq.ft.
Balcony Area	453.70 sq.ft.
<b>Total Area</b>	<b>2,003.49 sq.ft.</b>



All pictures, plans, layouts, information, data and details included in this brochure are indicative only and may change at any time up to the final 'as built' status in accordance with final designs of the project, regulatory approvals and planning permissions. All accessories and interior finishes such as wallpaper, chandeliers, furniture, electronics, white goods, curtains, hard and soft landscaping, pavements, features, gym, swimming pool(s) and other elements displayed in the brochure, or within the show apartment or between the plot boundary and the unit, are not part of the unit and are shown for illustrative purposes only.

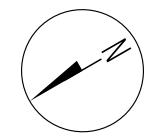
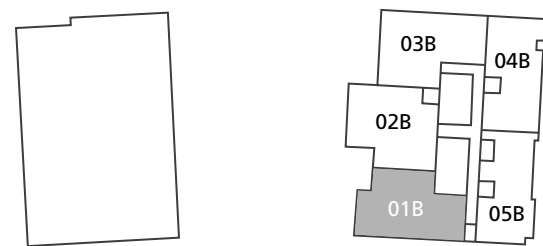
# 2 BEDROOMS

## - Type 14 -



**FLOORS**  
11 to 16

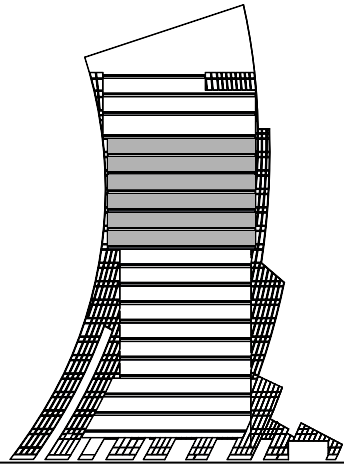
Unit Area	1,828.90 - 1,851.39 sq.ft.
Balcony Area	171.36 - 256.72 sq.ft.
<b>Total Area</b>	<b>2,022.75 - 2,101.12 sq.ft.</b>



All pictures, plans, layouts, information, data and details included in this brochure are indicative only and may change at any time up to the final 'as built' status in accordance with final designs of the project, regulatory approvals and planning permissions. All accessories and interior finishes such as wallpaper, chandeliers, furniture, electronics, white goods, curtains, hard and soft landscaping, pavements, features, gym, swimming pool(s) and other elements displayed in the brochure, or within the show apartment or between the plot boundary and the unit, are not part of the unit and are shown for illustrative purposes only.

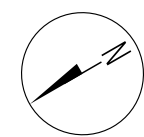
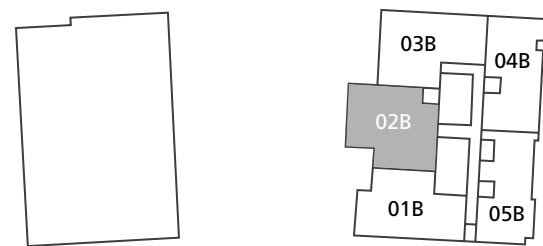
# 2 BEDROOMS

## - Type 15 -



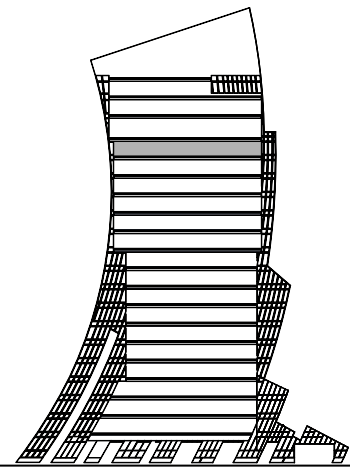
**FLOORS**  
11 to 16

Unit Area	1,898.22 - 2,123.83 sq.ft.
Balcony Area	43.70 - 198.38 sq.ft.
<b>Total Area</b>	<b>1,941.92 - 2,220.27 sq.ft.</b>



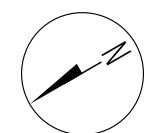
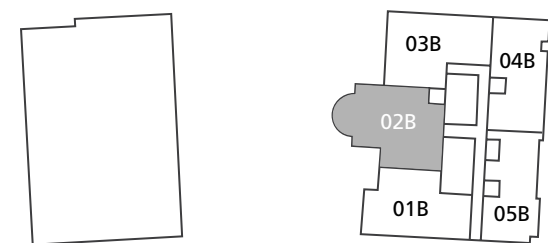
All pictures, plans, layouts, information, data and details included in this brochure are indicative only and may change at any time up to the final 'as built' status in accordance with final designs of the project, regulatory approvals and planning permissions. All accessories and interior finishes such as wallpaper, chandeliers, furniture, electronics, white goods, curtains, hard and soft landscaping, pavements, features, gym, swimming pool(s) and other elements displayed in the brochure, or within the show apartment or between the plot boundary and the unit, are not part of the unit and are shown for illustrative purposes only.

2 BEDROOMS  
 – Type 16 –



FLOOR  
 16

Unit Area	2,123.83 sq.ft.
Balcony Area	96.44 sq.ft.
<b>Total Area</b>	<b>2,220.27 sq.ft.</b>

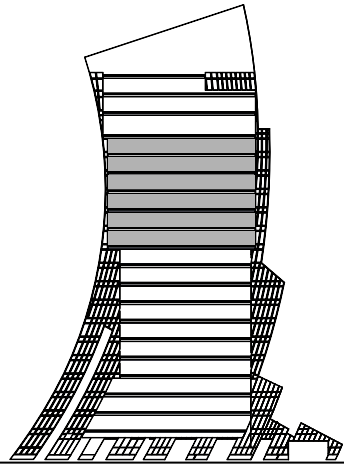


All pictures, plans, layouts, information, data and details included in this brochure are indicative only and may change at any time up to the final 'as built' status in accordance with final designs of the project, regulatory approvals and planning permissions. All accessories and interior finishes such as wallpaper, chandeliers, furniture, electronics, white goods, curtains, hard and soft landscaping, pavements, features, gym, swimming pool(s) and other elements displayed in the brochure, or within the show apartment or between the plot boundary and the unit, are not part of the unit and are shown for illustrative purposes only.



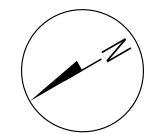
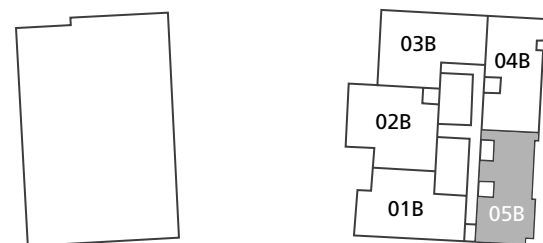


# 3 BEDROOMS – Type 1 –



**FLOORS**  
11 to 16

Unit Area	2,401.75 - 2,412.95 sq.ft.
Balcony Area	364.36 - 364.90 sq.ft.
<b>Total Area</b>	<b>2,766.11 - 2,777.84 sq.ft.</b>

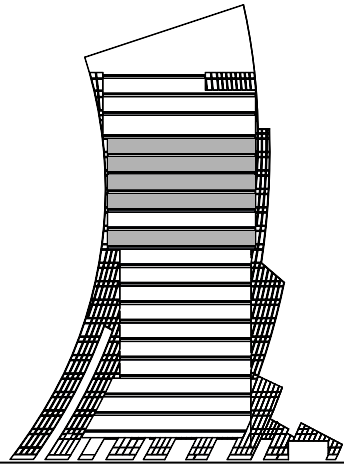


All pictures, plans, layouts, information, data and details included in this brochure are indicative only and may change at any time up to the final 'as built' status in accordance with final designs of the project, regulatory approvals and planning permissions. All accessories and interior finishes such as wallpaper, chandeliers, furniture, electronics, white goods, curtains, hard and soft landscaping, pavements, features, gym, swimming pool(s) and other elements displayed in the brochure, or within the show apartment or between the plot boundary and the unit, are not part of the unit and are shown for illustrative purposes only.



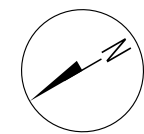
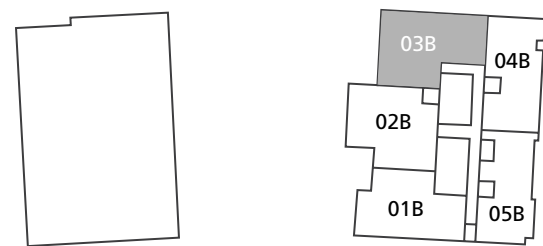
# 3 BEDROOMS

## - Type 2 -



**FLOORS**  
11, 13 to 16

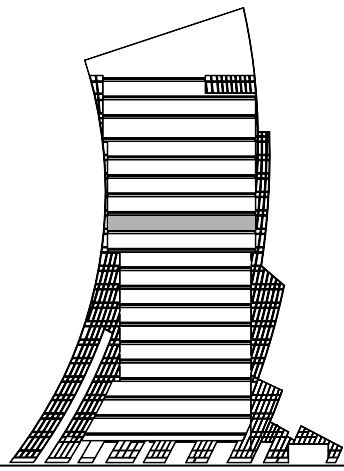
Unit Area	2,194.44 - 2,208.65 sq.ft.
Balcony Area	463.82 - 655.95 sq.ft.
<b>Total Area</b>	<b>2,672.46 - 2,850.39 sq.ft.</b>



All pictures, plans, layouts, information, data and details included in this brochure are indicative only and may change at any time up to the final 'as built' status in accordance with final designs of the project, regulatory approvals and planning permissions. All accessories and interior finishes such as wallpaper, chandeliers, furniture, electronics, white goods, curtains, hard and soft landscaping, pavements, features, gym, swimming pool(s) and other elements displayed in the brochure, or within the show apartment or between the plot boundary and the unit, are not part of the unit and are shown for illustrative purposes only.

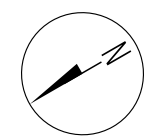
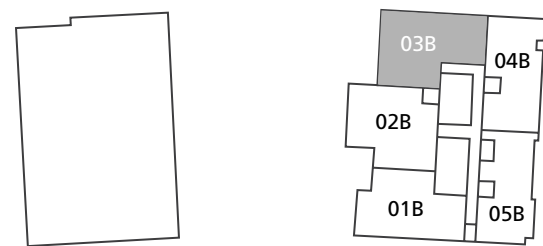
# 3 BEDROOMS

## - Type 2A -



**FLOOR**  
12

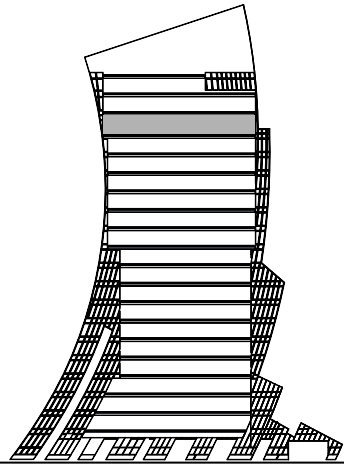
Unit Area	2,100.68 sq.ft.
Balcony Area	470.38 sq.ft.
<b>Total Area</b>	<b>2,571.07 sq.ft.</b>



All pictures, plans, layouts, information, data and details included in this brochure are indicative only and may change at any time up to the final 'as built' status in accordance with final designs of the project, regulatory approvals and planning permissions. All accessories and interior finishes such as wallpaper, chandeliers, furniture, electronics, white goods, curtains, hard and soft landscaping, pavements, features, gym, swimming pool(s) and other elements displayed in the brochure, or within the show apartment or between the plot boundary and the unit, are not part of the unit and are shown for illustrative purposes only.

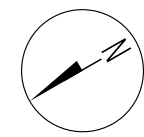
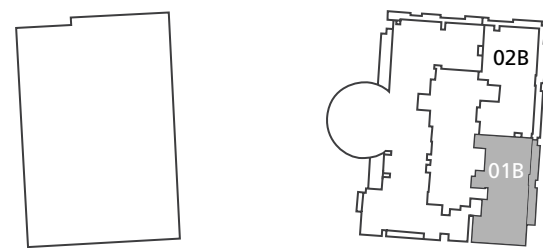
# 3 BEDROOMS

## - Type 3 -



**FLOOR**  
17

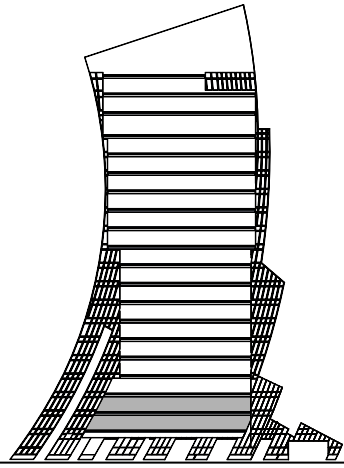
Unit Area	2,243.31 sq.ft.
Balcony Area	269.74 sq.ft.
<b>Total Area</b>	<b>2,513.05 sq.ft.</b>



All pictures, plans, layouts, information, data and details included in this brochure are indicative only and may change at any time up to the final 'as built' status in accordance with final designs of the project, regulatory approvals and planning permissions. All accessories and interior finishes such as wallpaper, chandeliers, furniture, electronics, white goods, curtains, hard and soft landscaping, pavements, features, gym, swimming pool(s) and other elements displayed in the brochure, or within the show apartment or between the plot boundary and the unit, are not part of the unit and are shown for illustrative purposes only.

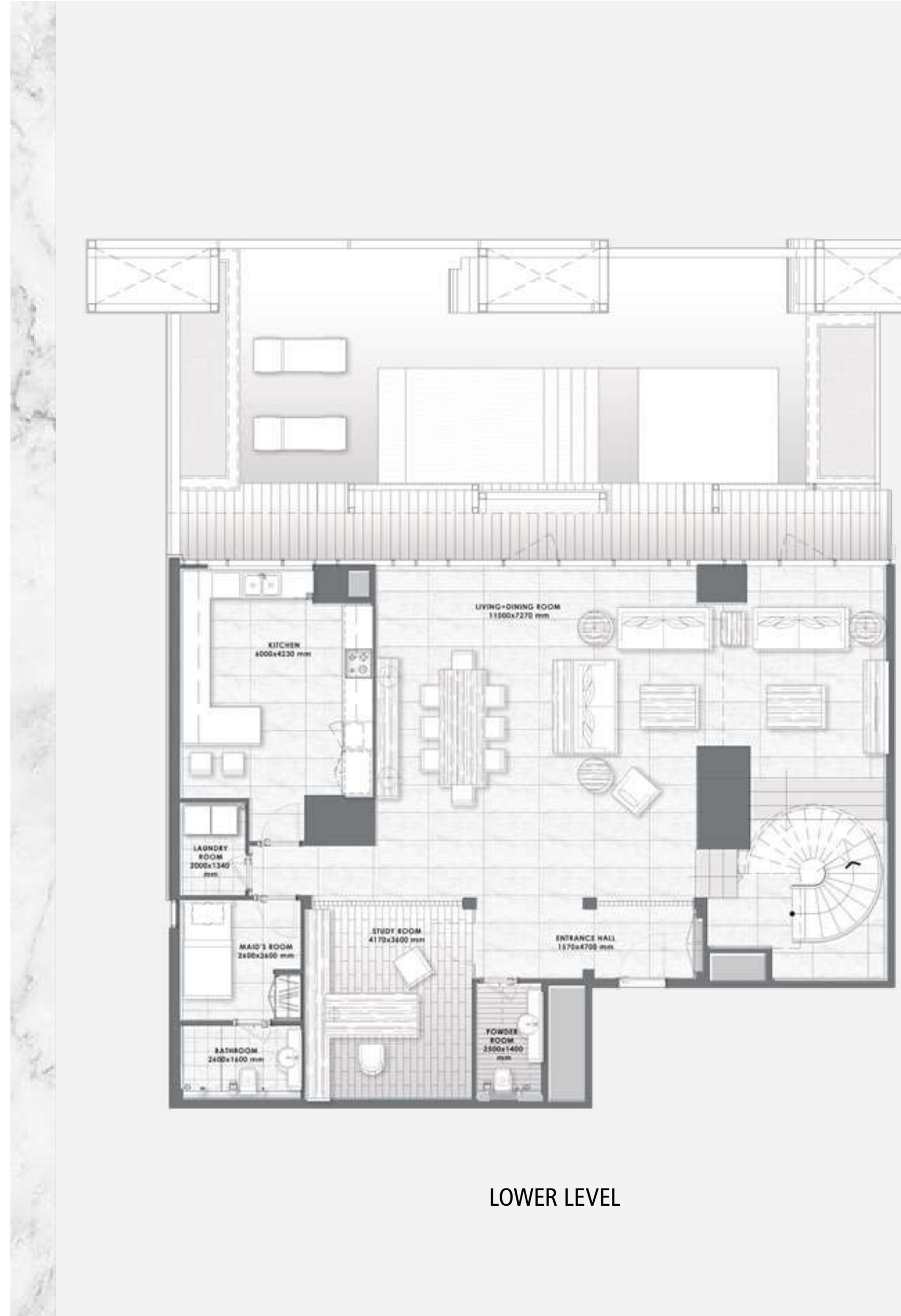
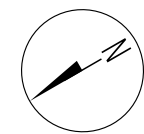
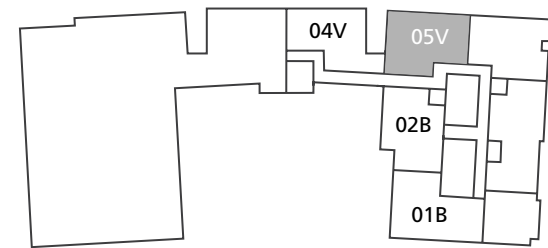


3 BEDROOMS  
 DUPLEX  
 – Type 2 –



FLOORS  
 1 & 2

Unit Area	3,083.21 sq.ft.
Balcony Area	1,278.32 sq.ft.
<b>Total Area</b>	<b>4,361.54 sq.ft.</b>



LOWER LEVEL

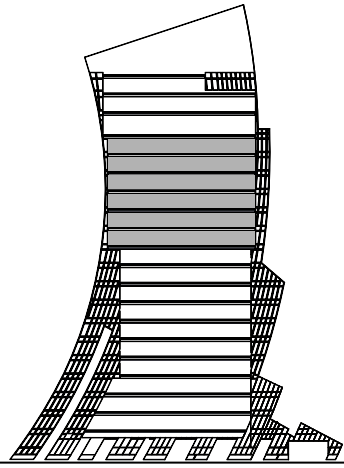


UPPERLEVEL

All pictures, plans, layouts, information, data and details included in this brochure are indicative only and may change at any time up to the final 'as built' status in accordance with final designs of the project, regulatory approvals and planning permissions. All accessories and interior finishes such as wallpaper, chandeliers, furniture, electronics, white goods, curtains, hard and soft landscaping, pavements, features, gym, swimming pool(s) and other elements displayed in the brochure, or within the show apartment or between the plot boundary and the unit, are not part of the unit and are shown for illustrative purposes only.

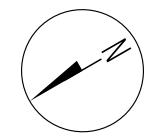
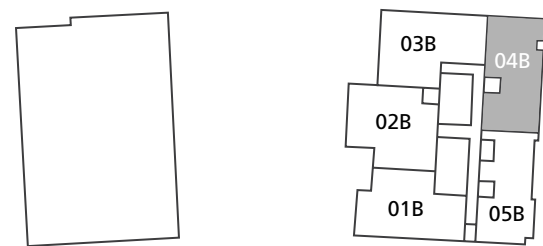
# 4 BEDROOMS

## - Type 1 -



**FLOORS**  
11 to 16

Unit Area	2,326.51 - 2,332.43 sq.ft.
Balcony Area	523.34 - 568.77 sq.ft.
<b>Total Area</b>	<b>2,849.85 - 2,850.39 sq.ft.</b>

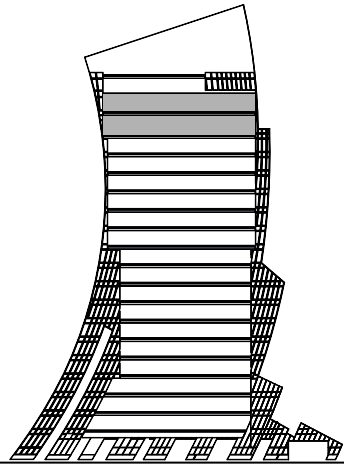


All pictures, plans, layouts, information, data and details included in this brochure are indicative only and may change at any time up to the final 'as built' status in accordance with final designs of the project, regulatory approvals and planning permissions. All accessories and interior finishes such as wallpaper, chandeliers, furniture, electronics, white goods, curtains, hard and soft landscaping, pavements, features, gym, swimming pool(s) and other elements displayed in the brochure, or within the show apartment or between the plot boundary and the unit, are not part of the unit and are shown for illustrative purposes only.



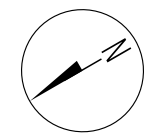
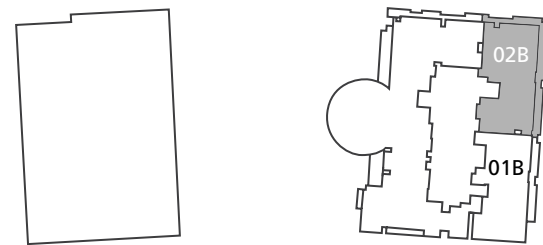
# 4 BEDROOMS

## - Type 1A -



**FLOORS**  
17 to 18

Unit Area	2,349.01 - 2,349.22 sq.ft.
Balcony Area	165.98 - 519.79 sq.ft.
<b>Total Area</b>	<b>2,515.20 - 2,868.80 sq.ft.</b>

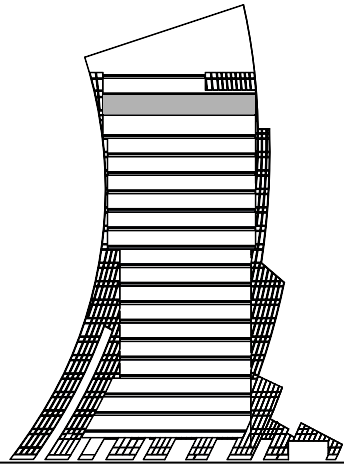


All pictures, plans, layouts, information, data and details included in this brochure are indicative only and may change at any time up to the final 'as built' status in accordance with final designs of the project, regulatory approvals and planning permissions. All accessories and interior finishes such as wallpaper, chandeliers, furniture, electronics, white goods, curtains, hard and soft landscaping, pavements, features, gym, swimming pool(s) and other elements displayed in the brochure, or within the show apartment or between the plot boundary and the unit, are not part of the unit and are shown for illustrative purposes only.



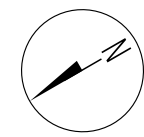
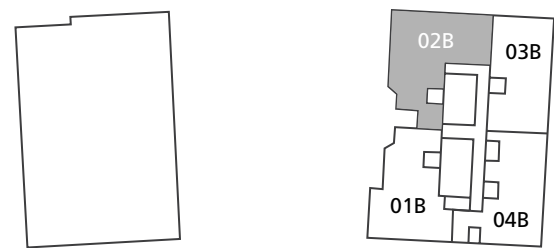
# 4 BEDROOMS

## - Type 2 -



FLOOR  
18

Unit Area	2,835.54 sq.ft.
Balcony Area	491.26 sq.ft.
<b>Total Area</b>	<b>3,326.80 sq.ft.</b>



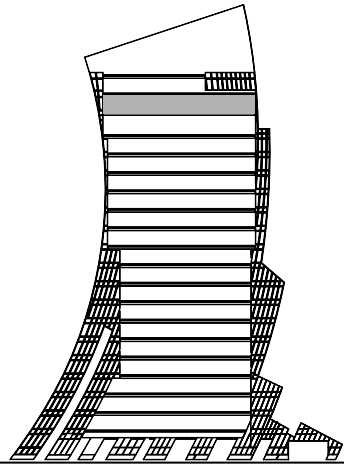
All pictures, plans, layouts, information, data and details included in this brochure are indicative only and may change at any time up to the final 'as built' status in accordance with final designs of the project, regulatory approvals and planning permissions. All accessories and interior finishes such as wallpaper, chandeliers, furniture, electronics, white goods, curtains, hard and soft landscaping, pavements, features, gym, swimming pool(s) and other elements displayed in the brochure, or within the show apartment or between the plot boundary and the unit, are not part of the unit and are shown for illustrative purposes only.





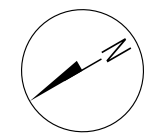
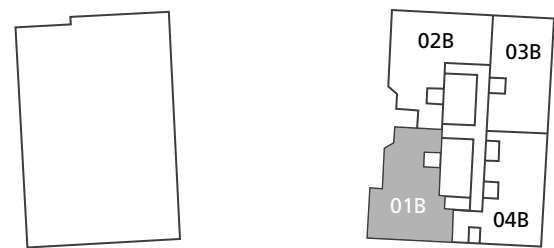
# 4 BEDROOMS

## – Type 3 –



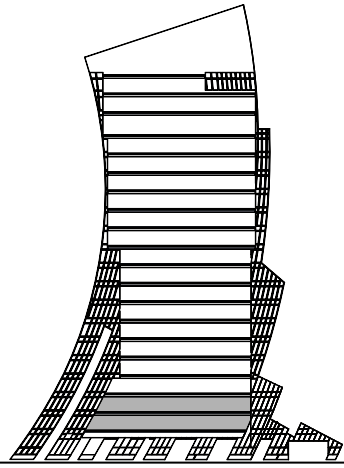
### FLOOR 18

Unit Area	2,503.15 sq.ft.
Balcony Area	359.08 sq.ft.
<b>Total Area</b>	<b>2,862.23 sq.ft.</b>



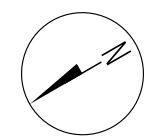
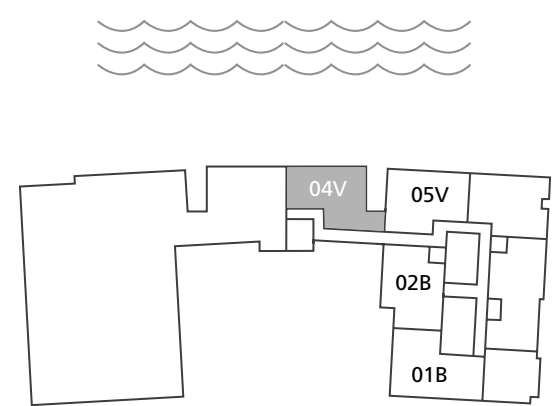
All pictures, plans, layouts, information, data and details included in this brochure are indicative only and may change at any time up to the final 'as built' status in accordance with final designs of the project, regulatory approvals and planning permissions. All accessories and interior finishes such as wallpaper, chandeliers, furniture, electronics, white goods, curtains, hard and soft landscaping, pavements, features, gym, swimming pool(s) and other elements displayed in the brochure, or within the show apartment or between the plot boundary and the unit, are not part of the unit and are shown for illustrative purposes only.

# 4 BEDROOMS DUPLEX – Type 2 –



## FLOORS 1 & 2

Unit Area	3,264.91 sq.ft.
Balcony Area	1,311.37 sq.ft.
<b>Total Area</b>	<b>4,576.28 sq.ft.</b>



LOWER LEVEL

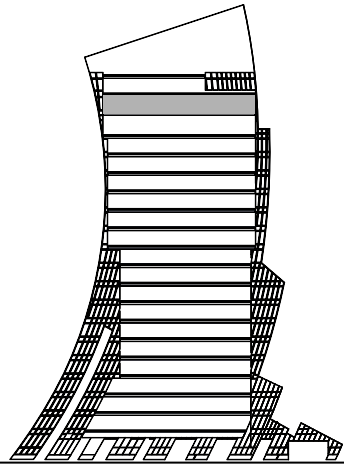


UPPERLEVEL

All pictures, plans, layouts, information, data and details included in this brochure are indicative only and may change at any time up to the final 'as built' status in accordance with final designs of the project, regulatory approvals and planning permissions. All accessories and interior finishes such as wallpaper, chandeliers, furniture, electronics, white goods, curtains, hard and soft landscaping, pavements, features, gym, swimming pool(s) and other elements displayed in the brochure, or within the show apartment or between the plot boundary and the unit, are not part of the unit and are shown for illustrative purposes only.

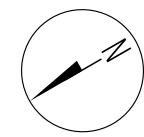
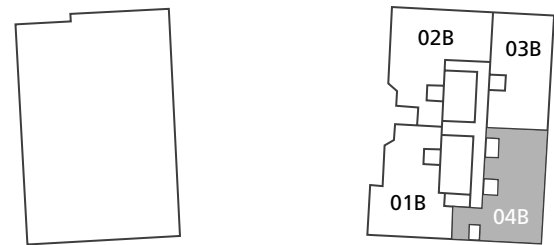
# 4 BEDROOMS

## - Type 4 -



### FLOOR 18

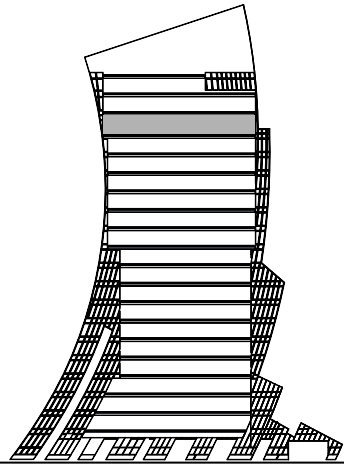
Unit Area	2,578.49 sq.ft.
Balcony Area	89.66 sq.ft.
<b>Total Area</b>	<b>2,668.16 sq.ft.</b>



All pictures, plans, layouts, information, data and details included in this brochure are indicative only and may change at any time up to the final 'as built' status in accordance with final designs of the project, regulatory approvals and planning permissions. All accessories and interior finishes such as wallpaper, chandeliers, furniture, electronics, white goods, curtains, hard and soft landscaping, pavements, features, gym, swimming pool(s) and other elements displayed in the brochure, or within the show apartment or between the plot boundary and the unit, are not part of the unit and are shown for illustrative purposes only.

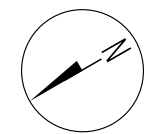
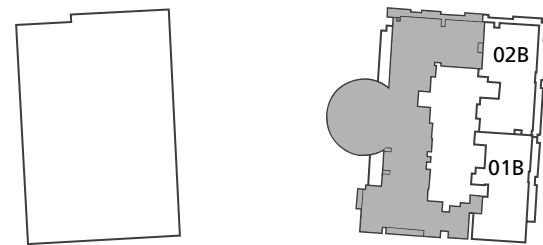


# THE PENTHOUSE



## FLOOR 17

Unit Area	7,357.35 sq.ft.
Balcony Area	849.70 sq.ft.
<b>Total Area</b>	<b>8,207.05 sq.ft.</b>



All pictures, plans, layouts, information, data and details included in this brochure are indicative only and may change at any time up to the final 'as built' status in accordance with final designs of the project, regulatory approvals and planning permissions. All accessories and interior finishes such as wallpaper, chandeliers, furniture, electronics, white goods, curtains, hard and soft landscaping, pavements, features, gym, swimming pool(s) and other elements displayed in the brochure, or within the show apartment or between the plot boundary and the unit, are not part of the unit and are shown for illustrative purposes only.

# DAR AL ARKAN

## BUILDING YOUR TRUST

---



Imagine a partner that anticipates your needs, understands your aspirations, and celebrates your successes. A partner that cuts through all the red tape and instead offers you on a golden platter the ideal home planned by world-class architects, built with world-class materials, designed by icons of fashion and managed & maintained by the top experts. And this commitment to delivering the highest quality projects hasn't wavered for the past 27 years. **This is Dar Al Arkan.**

—  
15,000

residential units delivered

—  
500,000 SQM

of commercial space

—  
OPERATING ON  
3 CONTINENTS

—  
SAR 31 BILLION

in assets (month 2021)

—  
SAR 11 BILLION

in capital (month 2021)

—  
SAUDI STOCK  
EXCHANGE

listed

## HEAD OFFICE

---

**Riyadh, KSA**  
12622 Makkah Road,  
Al Wizarat, Beside Riyadh  
Marriott Hotel, Riyadh

800 123 3333  
info@alarkan.com

## SALES CENTRES

---

**Riyadh, KSA**  
Al Qasr Mall, As Suwaidi  
Al Am, As Suwaidi, 12791,  
Riyadh

**Riyadh, KSA**  
Shams Ar Riyadh,  
13913 Salbukh Road,  
Riyadh

**Jeddah, KSA**  
Office 83, Al Mukhmal  
Tower, Al-Khalidiya,  
23422, Prince Saud Al  
Faisal Road, Jeddah

**Medina, KSA**  
Prince Sultan Road – Al Hijra,  
Al Madinah Al Munawarah,  
Medina

---

**Dubai, UAE**  
Conrad Dubai,  
Sheikh Zayed Road,  
Opposite  
World Trade Centre,  
PO Box 2523, Dubai  
+971 800 40404

**Sarajevo, BiH**  
Ul. Fra Andela,  
Zvizdovica Br. 1,  
D-mezanin,  
71 000 Sarajevo, BiH

**Beijing, China**  
303-309, North Tower,  
Beijing Kerry Centre,  
No.1 Guanghua Road,  
Chaoyang District  
Beijing  
+86 132 5888 6222

# DAR AL ARKAN

[www.TheDaVinciTower.com](http://www.TheDaVinciTower.com)